

0 80689 50023 7



THE UGLY CHRISTMAS SWEATER SONG

Arr. SEMSEN

SATB

THE UGLY CHRISTMAS SWEATER SONG

from the Christmas Musical Drama
How To Have The Best Christmas Ever!

WORDS AND MUSIC BY
JOEL LINDSEY
AND JEFF BUMGARDNER

ARRANGED &
ORCHESTRATED BY
DANIEL SEMSEN



CD ChoralTrax (Stereo/Split/Demo)
Orchestration
Stem Mixes

0 80689 20633 7
0 80689 33708 6
0 80689 72714 6



WORD MUSIC
& CHURCH RESOURCES

wordchoralclub.com
NASHVILLE, TN

The Ugly Christmas Sweater Song

(Duet with Choir)

Words and Music by
JOEL LINDSEY
 and **JEFF BUMGARDNER**
Arranged by Daniel Semsen



Broadway feel ♩ = 110

D6

mf

4 E7 G

7 A7 D6

10 *SOLO (Male)*
mf

Ev - ry - bod - y needs a Christ - mas sweat - er,

10 D6 E7

mf



This symbol refers to the corresponding track numbers on the ChoralTrax Accompaniment CD.
 The top number in each box refers to the Stereo Trax; the bottom number to the Split Trax.

Performance Time: 2:56

© 2016, this arr. 2017 Dayspring Music, LLC (BMI)/ Songs from the Inside (BMI)
 (Both adm. by Warner-Tamerlane Publishing Corp.)/ Gathering Songs, LLC (BMI) (Adm. by Music Services)/
 Sunset Gallery Music (BMI). All Rights Reserved. Used by Permission.

EVEN IF YOU POSSESS A CCLI LICENSE, YOU MAY NOT COPY THIS MUSIC.
 If you have questions about CCLI, please call 800/234-2446.

13
8
and ug - ly Christ - mas sweat - ers are the
G A7

13
8
best. They're fes - tive and they're
D6 G

16
8
neat, and no out - fit is com - plete with - out
D6

19
8
— some Mer - ry Christ - mas on your chest.
A7 D6

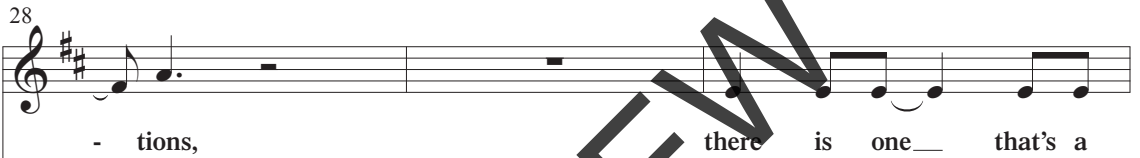
22
8
— some Mer - ry Christ - mas on your chest.
A7 D6

FOR PREVIEW ONLY

25 *SOLO (Female)*

A7

mf



D6

A7



D6

34 (Female)

con - ver - sa - tion start - er that_ will nev - er have_ a clone._

34 G D6

37

(Male)

And it does - n't have to match_ a thing you

E7

37 E7

40

own. Could be a rein - deer made of

own.

Could be a rein - deer made of

A7

G

40 A7 G

43 *(Solo)*

Or a tree with lights that blink.

8 *(Male)*

glit - ter. You're

43 D6

46  *molto rit.*

8 *molto rit.*

nev - er dressed so well as when your tor - so says No -

46 E7 A7 *molto rit.*

49 *a tempo* *mf* **DUET (Female)**

Ev - 'ry - bod - y (harm.) (Male)

8 *a tempo*

8 el! Ev - 'ry - bod - y

49 D6

49 *a tempo* *mf*

FOR PREVIEW ONLY

52 (Female)

needs a Christ - mas sweat - er, and

(Male)

needs a Christ - mas sweat - er, and

52

CHOIR: unison *mf*

Christ - mas sweat - er,

52

E7

55

ug - ly Christ - mas sweat - ers are the best.

8

ug - ly Christ - mas sweat - ers are the best.

55

(Choir)

they are the best.

55

G

A7

D6

58 (Female)

Musical staff for Female voice, measures 58-60. The staff shows a melody in G major with lyrics: "They're fes - tive and they're neat, and no".

They're fes - tive and they're neat, and no

(Male)

Musical staff for Male voice, measures 58-60. The staff shows a melody in G major with lyrics: "They're fes - tive and they're neat, and no".

They're fes - tive and they're neat, and no

58 (Choir)

Musical staff for Choir, measures 58-60. The staff shows a choral setting in G major with lyrics: "They're fes - tive and they're neat, and no". The word "div." is written above the staff.

They're fes - tive and they're neat, and no

G

Piano accompaniment for measures 58-60. The right hand plays chords in G major, and the left hand plays a simple bass line.

61

Musical staff for Female voice, measures 61-63. The staff shows a melody in G major with lyrics: "out - fit is com - plete with - out some Mer - ry".

out - fit is com - plete with - out some Mer - ry

Musical staff for Male voice, measures 61-63. The staff shows a melody in G major with lyrics: "out - fit is com - plete with - out some Mer - ry".

out - fit is com - plete with - out some Mer - ry

61

Musical staff for Choir, measures 61-63. The staff shows a choral setting in G major with lyrics: "out - fit is com - plete with - out some Mer - ry".

out - fit is com - plete with - out some Mer - ry

D6

A7

Piano accompaniment for measures 61-63. The right hand plays chords in G major (D6 and A7), and the left hand plays a simple bass line.

64 (Female)

Musical staff for Female voice, measures 64-66.

Christ - mas on your chest.

(Male)

Musical staff for Male voice, measures 64-66.

Christ - mas on your chest.

64 (Choir)

f

SOLO

Musical staff for Choir, measures 64-66.

Christ - mas on your, Ho Ho Ho! My

D6

Piano accompaniment for measures 64-66.

67 (Solo)

Musical staff for Solo voice, measures 67-69.

dad had one with San - ta dressed like El - vis,

A7

D6

Piano accompaniment for measures 67-69.

70

Musical staff for Solo voice, measures 70-72.

with cot - ton balls and sleeves made out of

A7

Piano accompaniment for measures 70-72.



(Impersonating Elvis) Thank you, thank you very much. SOLO

73

vel - vet. I saw one with

D6 G

76

kit-tens that were dressed like fit - tles elves.

BASS SOLO

76

And

79 *molto rit.*

I had one that used to play the tune to "Sil - ver

E7 A7

molto rit.

FOR PREVIEW ONLY

82 (Female) a tempo

f

Musical staff for Female voice, measures 82-84.

Ev - 'ry - bod - y

(Male) a tempo

f

Musical staff for Male voice, measures 82-84.

Ev - 'ry - bod - y

82 (Choir) a tempo

f CHOIR

Musical staff for Choir (treble clef), measures 82-84.

Ev - 'ry - bod - y

Musical staff for Choir (bass clef), measures 82-84.

Bells.”

Piano accompaniment, measures 82-84. Includes *tr* and *a tempo f* markings.

D6

Female vocal line, measures 85-87. Lyrics: needs a Christ - mas sweat - er, and

Male vocal line, measures 85-87. Lyrics: needs a Christ - mas sweat - er, and

Choir vocal line, measures 85-87. Lyrics: needs a Christ - mas sweat - er, and

Piano accompaniment, measures 85-87.

E7

Piano accompaniment, measures 85-87.

FOR PREVIEW ONLY

(Female)

ug - ly Christ - mas sweat - ers are__ the best.

(Male)

ug - ly Christ - mas sweat - ers are__ the best.

(Choir)

ug - ly Christ - mas sweat - ers are__ the best.

ug - ly Christ - mas sweat - ers are__ the best.

G

A7

D6

They're fes - tive and__ they're neat, and__ no

They're fes - tive and__ they're neat, and__ no

They're fes - tive and__ they're neat, and__ no

They're fes - tive and__ they're neat, and__ no

They're fes - tive and__ they're neat, and__ no

They're fes - tive and__ they're neat, and__ no

They're fes - tive and__ they're neat, and__ no

G

94 (Solo)



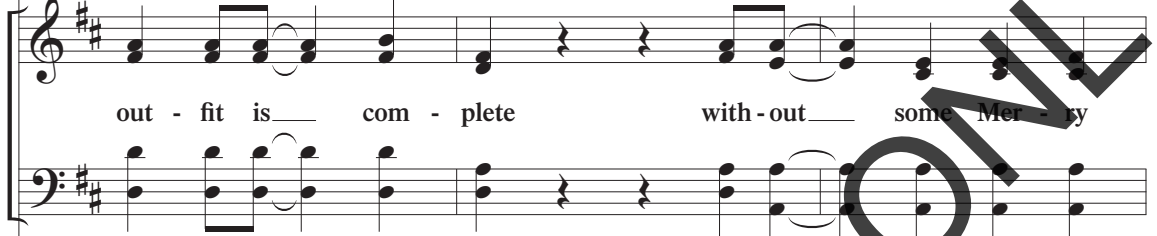
out - fit is com - plete with - out some Mer - ry

(Male)



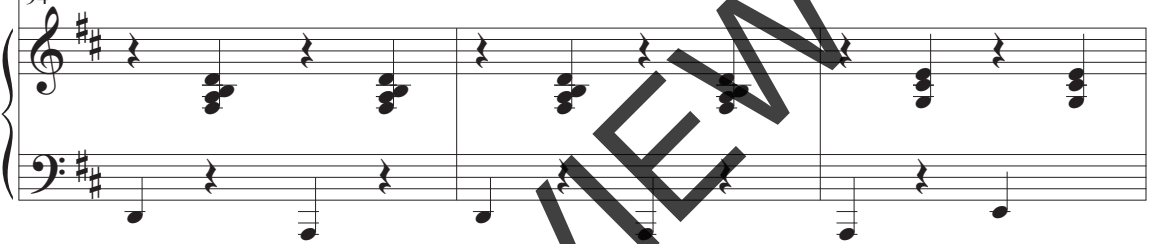
out - fit is com - plete with - out some Mer - ry

94 (Choir)



out - fit is com - plete with - out some Mer - ry

94 D6



A7



Christ - mas on your chest.

mf



Christ - mas on your chest.

There's noth - ing



Christ - mas on your chest.

94 D6



D6

100 (Male Solo)

8 bet - ter than a thrift store sweat - er,

100 *mf* CHOIR: unison

There's noth - ing bet - ter than a thrift store

100 A7 D

mf

103

8 be - daz - zled and be - glam - oured just for

103

sweat er;

103 A7

106 (Male Solo)

8

you. An - y kind of thing_ you can im-ag-

106 *mf* (Choir) *div.*

8

just for you. An - y kind of thing_ you can im-ag-

106 D6 G

110

4
8

8

- ine can be made with yarn and tin - sel and some

110

CHOIR: unison

8

can be made with yarn and tin - sel and some,
- ine

110 D6 E7

Slower shuffle ♩ = 95 ♩ = ♩³
(Male)

ALL
DUET *ff*

114
8

glue.

Ev-'ry-bod-y needs a Christ-mas

114
(Choir) *div.*

CHOIR *ff*

some
div. glue.

Ev-'ry-bod-y needs a Christ-mas

114

A7 Bb7 Eb6

116
8

sweat-er, and ug - ly Christ-mas sweat - ers are the

116

sweat-er, and ug - ly Christ-mas sweat - ers are the

116

F7 Ab6 Bb7

118 *(Duet)*
accel. ♩ = 110 (continue shuffle)

best. *(Choir)*
accel.

118 *accel.* *little faster*

120 *8*

120

120 *Eb Cm7 Bb*

122 (Duet)

chest. They're fes - tive and they're neat, and no

122 (Choir)

chest. They're fes - tive and they're neat, and no

122 Eb Eb7 G Ab6

124

out - fit is com - plete with - out some Mer - ry Christ - mas on your

124

out - fit is com - plete with - out some Mer - ry Christ - mas on your

124 Eb Cm7 Bb

126 *(Duet)* *(Male solo)* *Straight eighths rit.*

chest. Oh, ug - ly Christ-mas sweat - ers are the

126 *(Choir)* *Straight eighths rit.*

chest. Oh, ug - ly Christ-mas sweat - ers are the,

126 Eb Eb7 G Fm7 Bb7

Straight eighths rit.

128 *molto rit.*

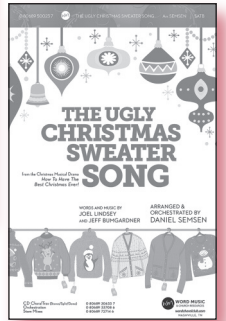
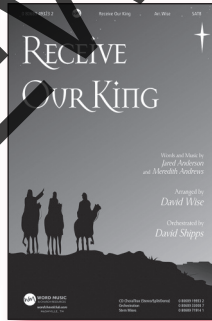
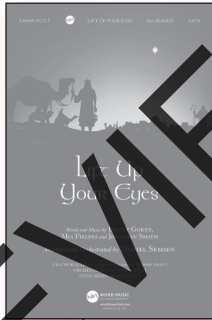
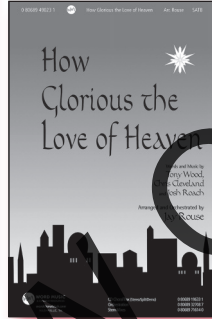
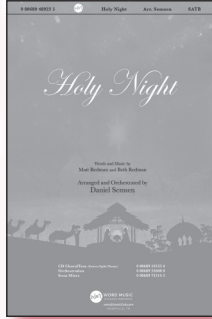
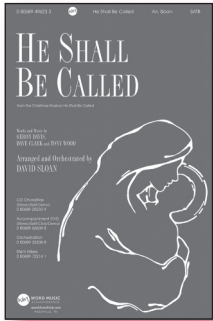
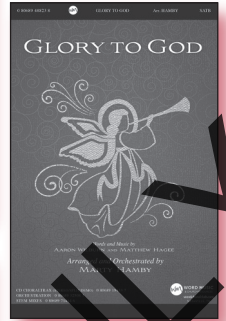
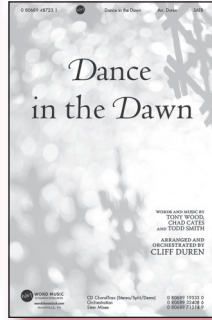
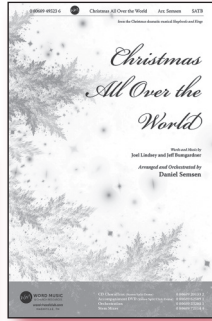
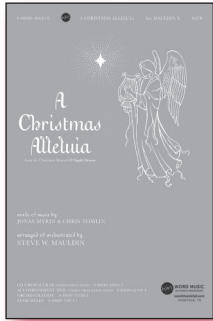
best, the best!

128 *molto rit.*

they are the best!

128 Ab Eb G Fm7 Eb (5)

molto rit. *fff*



Also
FOR THE
Word.
MUSIC
& CHURCH
RESOURCES

A CHRISTMAS ALLELUIA

Steve W. Mauldin
0 80689 49423 9

CHRISTMAS ALL OVER THE WORLD

Daniel Semsen
0 80689 49523 6

DANCE IN THE DAWN

Cliff Duren
0 80689 48723 1

GLORY TO GOD

Marty Hamby
0 80689 48823 8

HE SHALL BE CALLED

David Sloan
0 80689 49623 3

HOLY NIGHT

Daniel Semsen
0 80689 48923 5

HOW GLORIOUS THE LOVE OF HEAVEN

Jay Rouse
0 80689 49023 1

**IT'S CHRISTMAS with
Away in a Manger and
Go, Tell It on the Mountain**

Jay Rouse
0 80689 49123 8

LIFT UP YOUR EYES

Daniel Semsen
0 80689 49223 5

RECEIVE OUR KING

David Wise
David Shippis
0 80689 49323 2

THE UGLY CHRISTMAS SWEATER SONG

Daniel Semsen
0 80689 50023 7

