



Pa La La La La!

Tinsel Time
Fun for
Christmas Choir!

Featuring The Christmas
Song, Rudolph the
Red-Nosed Reindeer,
Nuttin' For Christmas,
Santa Claus Is Comin' to
Town... and 10 more!

Arranged by
Daniel Semsen,
Cliff Duren,
David T. Clydesdale,
Joshua Spacht, and
David Wise

Word

MUSIC PUBLICATIONS
& CHURCH RESOURCES



Tinsel-Time Fun for Christmas Choir!

Featuring The Christmas
Song, Rudolph the
Red-Nosed Reindeer,
Nuttin' For Christmas,
Santa Claus Is Comin' to
Town... and 10 more!

Arranged by
Daniel Semsen,
Cliff Duren,
David T. Clydesdale,
Joshua Soght, and
David Wise

COMPANION MATERIALS

Choral Book	0 80689 50717 5
Listening CD	0 80689 88122 0
Accompaniment CD (Split)	0 80689 91212 2
CD PracticeTrax	0 80689 71002 5
Orchestration (pdf on CD-ROM)	0 80689 50967 4
Accompaniment DVD	0 80689 51909 3
DVD Preview Pak	0 80689 58539 5
Stem Mixes	0 80689 87142 9
Bulk CDs (10-pak)	0 80689 80672 8

This package of 10 Listening CDs provides an inexpensive way
for your choir members to have their own copy of the recording.

T-SHIRTS AVAILABLE!

For digital availability of these and other products, go to wordmusic.com

INSTRUMENTATION

FLUTE 1, 2
OBOE
CLARINET 1, 2
CLARINET 3
(doubles Viola)
BASSOON
(doubles Cello)
BASS CLARINET
(doubles String Bass)
SOPRANO SAX
(doubles Oboe)

ALTO SAX 1, 2
(doubles Horn 1, 2)
TENOR SAX
TENOR SAX/BARITONE T.C.
(doubles Trombone 1, 2)
BARITONE SAX
(doubles Tuba)
HORN 1, 2
TRUMPET 1, 2, 3
TROMBONE 1, 2
TROMBONE 3/TUBA

VIOLIN 1, 2*
VIOLA*
CELLO
PERCUSSION
TIMPANI
HARP
RHYTHM
STRING BASS
STRING REDUCTION

*simplified parts included as needed

**instrumentation varies on a song-by-song basis

Music Engraved by BRENT ROBERTS

Edited by SARAH HUFFMAN &
ANISSA SANBORN

Cover by TIM BIGONIA

Art Production by FUDGE CREATIVE

Word
MUSIC PUBLICATIONS
& CHURCH RESOURCES
wordmusic.com

1 This symbol indicates a track number on the
Accompaniment Compact Disc. Selecting a given CD
track number will start the accompaniment track at
the corresponding musical section indicated in the
choral book.

Possession of a CCLI license does not give you
permission to make any copy of the music contained
in this book. If you are unsure as to what rights you
do have to copy under a CCLI license or if you want
information about CCLI, please call 1-800-234-2446.



CONTENTS

in sequential order

Deck the Hall	3
Holly Jolly Christmas	20
Rudolph, the Red-Nosed Reindeer	35
The Twelve Days of Christmas	47
Christmas Is	62
Santa Claus Is Comin' to Town	73
Nuttin' for Christmas with All I Want for Christmas Is My Two Front Teeth	
Extended version (with optional entrance/exit music for Children's Choir)	87
Shortened version (without optional entrance/exit music)	89
Rockin' Around the Christmas Tree	108
It Came Upon the Midnight Clear	118
Mary, Did You Know?	132
Merry Christmas to You	142
Give Me Christmas	159
The Christmas Song	174

Deck the Hall

TRADITIONAL WELSH TUNE

Arranged by Cliff Duren

1

Gospel groove ♩ = 130

Drum fill gliss. *f*

Chords: Eb, Eb/Db, Ab/C, Abm6/Cb, Eb/Bb, Eb/Db

8vb - 1

Detailed description: This block contains the first system of the piano introduction. It features a grand staff with treble and bass clefs. The music is in 4/4 time and E-flat major. It begins with a 'Drum fill gliss.' in the bass clef, followed by a series of chords and melodic lines. A dynamic marking of *f* is present. Chord symbols are placed above the staff: Eb, Eb/Db, Ab/C, Abm6/Cb, Eb/Bb, and Eb/Db. An 8vb pedal point is indicated in the bass clef.

Chords: Ab/C, Eb/Bb, Eb/Db

Detailed description: This block contains the second system of the piano introduction. It continues the melodic and harmonic development from the first system. Chord symbols are placed above the staff: Ab/C, Eb/Bb, and Eb/Db.

Chords: Ab/C, Cbmaj7, Db2/Bb

Detailed description: This block contains the third system of the piano introduction. It continues the melodic and harmonic development. Chord symbols are placed above the staff: Ab/C, Cbmaj7, and Db2/Bb.

f CHOIR

unison

Deck the hall with boughs of hol - ly. Fa la la la la la

Detailed description: This block contains the vocal introduction for the choir. It is marked *f* and 'CHOIR'. The melody is written in a single line with a unison instruction. The lyrics are 'Deck the hall with boughs of hol - ly. Fa la la la la la'. The piano accompaniment is shown in the grand staff below.

Chords: Cm7, Ebsus/F, Eb2/G

Detailed description: This block contains the piano accompaniment for the vocal line. It shows the chord progression: Cm7, Ebsus/F, and Eb2/G. The piano part consists of chords in the right hand and a simple bass line in the left hand.

Arr. © 2014 Dayspring Music, LLC (BMI)
All Rights Reserved.

EVEN IF YOU POSSESS A CCLI LICENSE, YOU MAY NOT COPY THIS MUSIC.
If you have questions about CCLI, please call 800/234-2446.

13

la la la! 'Tis the sea - son to be jol - ly.

unison

13

Abmaj7 Eb2/G Eb C7(#9)

16

Fa la la la la la la la! Don we now our

mf

16

Ebsus/F Eb2/G Abmaj7 Eb/Bb Bb Bb/Ab

mf

19

ga ap-par - el. Fa la la la la la la!

19

Eb/G Ebsus/F Eb Bb/D Cm7 Am7(b5) Bb F/C Bb/D



22 *f*

Troll the an - cient yule - tide car - ol. Fa la la la la la

22 *f*

E^b *E^b D^b* *A^b C* *E^b B^b* *A^b*

25

la la la!

25 *E^b B^b* *B^b* *E^b* *E^b D^b* *A^b C*

28 *mf*

See the blaz - ing

28 *C^bmaj7* *D^b2 B^b* *E^b*

mf

31

yule be - fore us. Fa la la la la la la la la!

31

Cm7 Eb sus F Eb2 G Abmaj7 Eb2 G

34

Strike the harp and join the cho - rus. Fa la la la la la

unison

34

Eb C7(#9) Eb sus F Eb2 G

37

mf

la la la! Fol - low me in mer - ry meas - ure.

37

Abmaj7 Eb Bb Ab Eb sus F Eb Bb D

mf

40 *f*

Fa la la la la la la la! While I tell of

This system contains the first two staves of music. The top staff is a vocal line with lyrics 'Fa la la la la la la la! While I tell of'. The bottom staff is a piano accompaniment. A dynamic marking of *f* (forte) is placed above the first measure of the piano part. The key signature has two flats (B-flat and E-flat).

40 Cm7 Am7(b5) B \flat $\frac{F}{C}$ B \flat D $\frac{E\mathbf{b}}{D\mathbf{b}}$ *f*

This system contains the piano accompaniment for measures 40-42. It features a variety of chords: Cm7, Am7(b5), B-flat, F/C, B-flat, D, and E-flat/D-flat. A dynamic marking of *f* is present. The piano part includes a melodic line in the right hand and a bass line in the left hand.

43 yule - tide treas - ure. Fa la la la la la la la

This system contains the third system of music. The vocal line continues with 'yule - tide treas - ure. Fa la la la la la la la'. The piano accompaniment features a change in time signature from 2/4 to 4/4. A dynamic marking of *f* is present.

43 $\frac{A\mathbf{b}}{C}$ $\frac{E\mathbf{b}}{B\mathbf{b}}$ A \mathbf{b} $\frac{E\mathbf{b}}{B\mathbf{b}}$ B \mathbf{b}

This system contains the piano accompaniment for measures 43-45. It features chords: A-flat/C, E-flat/B-flat, A-flat, E-flat/B-flat, and B-flat. The time signature is 4/4.

46 la!

This system contains the fifth system of music. The vocal line has a long note for 'la!'. The piano accompaniment has long notes in both hands. The time signature is 4/4.

46 $\frac{E\mathbf{b}}{D\mathbf{b}}$ $\frac{A\mathbf{b}}{C}$ C \mathbf{b} maj7

This system contains the piano accompaniment for measures 46-48. It features chords: E-flat/D-flat, A-flat/C, and C-flat major 7. The time signature is 4/4.

49

D^b E^b2 F2 F E^b B^b D

49

3

52

D^bmaj7 E^b2 E^bunis. Funis.

52

55

Fast a-way the old year pass - es. Fa la la la la la

unison

F^{sus} G F2 A

55

a cappella (drums cont.)

ff

58

la la la! Hail the new, ye lads and lass - es.

unison

58

Bbmaj7 F2/A Eb13 Dm7 D7(#9)

61

Fa la la la la la la la la! Sing we joy - ous

f

61

Fsus/G F2/A Bbmaj7 E/C C C/Bb

64

all to- geth - er. Fa la la la la la la la!

64

E/A Fsus/G F C/E Dm7 Bm7(b5) C G/D C/E

FOR PREVIEW ONLY

67 *ff*

Heed - less of the wind and weath - er. Fa la la la la,

67 *ff*

F Eb Bb/D E/C

70

Fa la la la la,

70

Bbmaj7 F2 (String cues)

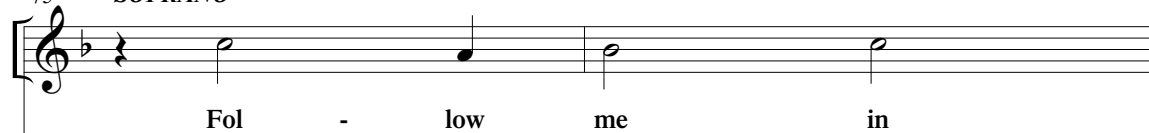
Drums play through rests

73

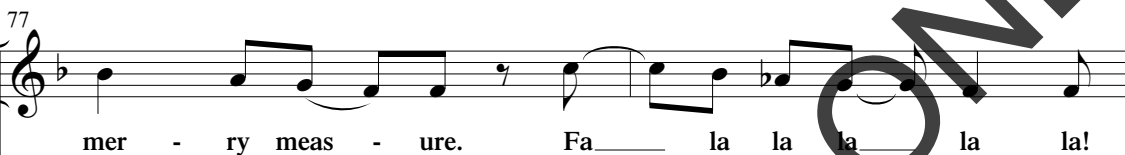
Fa la la la la la la la!

73

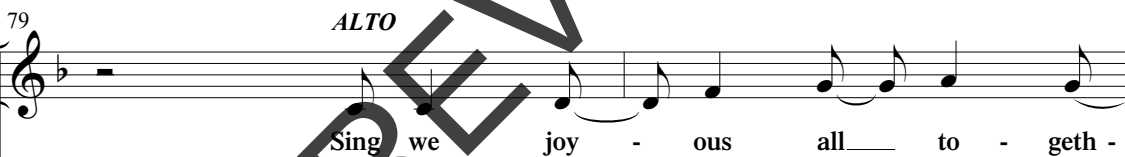
Bb F/A Bb E/C C

75 *SOPRANO*

75 F F Eb Bb D



77 Dbmaj7 Eb2 F



79 F Eb Bb D



81 Dbmaj7 Eb2 F

TENOR

83

We will sing — it! We will sing —

83

F Eb Bb D

85

— it! Sing - in' Fa — la la la la la!

85

Dbmaj7 Eb2 F

BASS

87

Strike the harp and join the cho - rus!

87

F Eb Bb D

89

Sing of Christ - mas! Fa — la la la la la!

89

Dbmaj7 Eb2 F



91

Fol - low me in

Sing we joy - ous all to - geth

8 We will sing it! We will sing

Strike the harp and join the chorus!

91

F Eb Bb D

93

mer - ry meas ure. Fa la la la la la!

- er. Fa la la la la la!

it! Sing - in' Fa la la la la la!

Sing of Christ-mas! Fa la la la la la!

93

Dbmaj7 Eb2 F

95

Fol - low me in
 Sing we joy - ous all to - geth -
 We will sing it! We will sing

Strike the harp and join the chorus!

F
Eb

Bb
D

95

97

5

mer - ry meas ure Fa la la la la
 er. Fa la la la la!
 it! Sing - in' Fa la la la la!
 Sing of Christ-mas! Fa la la la la!

Dbmaj7

Eb2

F

97

99

Fol - low me in
Sing we joy - ous all to - geth
We will sing it! We will sing
Strike the harp and join the chorus!

99

a cappella (drums cont.)

101

mer - ry meas - ure. Fa la la la la!
- er. Fa la la la la!
Sing - in' Fa la la la la!
Sing of Christ-mas! Fa la la la la!

101

Dbmaj7 Eb2 F

103

Fol - low me in

Sing we joy - ous all to - geth

We will sing it! We will sing

Strike the harp and join the chorus!

103

F Eb Bb D

105

6

mer - ry meas - ure. Fa la la la la!

- er. Fa la la la la!

it! Sing - in' Fa la la la la!

Sing of Christ-mas! Fa la la la la!

105

Dbmaj7 Eb2

107 *f* (ALL WOMEN)

Sing we joy - ous all to - geth - er. Fa la la la la la
 (ALL MEN)

107 C F/C Dm7 Bm7(b5)
f Drum fill Drum fill

110 *ff*

la la la! Heed - less of the wind and weath - er.
unison

110 C G/D C/E F F/Eb

113

Fa la la la la, Fa la la la la,

113 Bb/D F/C Bbmaj7 F2/A

Drums play through rests

7

116

Fa la la la la la la la!

116

B \flat F/A B \flat F/C C

119 *SOPRANO*

Fol - low me in

ALTO

Sing we joy - ous all to - geth -

TENOR

We will sing it! We will sing

BASS

Strike the harp and join the cho - rus!

119

F F/E \flat B \flat /D

121

mer - ry meas - ure. Fa__ la la la__ la la! Fol - low
 - er. Fa__ la la la__ la la! Sing we joy
 _ it! Sing-in' Fa__ la la la__ la la! We will sing.
 Sing of Christ-mas! Fa__ la la la__ la la! Strike the harp and

$D^{\flat}maj7$ $E^{\flat}2$ F F E^{\flat}

121

124

me in mer - ry meas - ure. Fa__ la la la__ la la!
 - ous all__ to - geth - er. Fa__ la la la__ la la!
 _ it! We will sing it! Sing-in' Fa__ la la la__ la la!
 join the cho-rus! Sing of Christ-mas! Fa__ la la la__ la la!

B^{\flat} D $D^{\flat}maj7$ $E^{\flat}2$ F

124

Holly Jolly Christmas

Words and Music by
JOHNNY MARKS

Arranged by David T. Clydesdale

8 **Fast swing** ♩ = 144 ♪ = $\frac{3}{4}$

f

C6 Cmaj7 C6

This system shows the piano introduction for measures 8-10. It features a treble and bass clef with a 4/4 time signature. The tempo is marked 'Fast swing' with a quarter note equal to 144 beats per minute. A dynamic marking of *f* (forte) is present. Chord symbols C6, Cmaj7, and C6 are written above the treble staff. A large watermark 'FOR PREVIEW ONLY' is overlaid diagonally across the page.

4 *CHOIR f*

Have a hol - ly, jol - ly

Dm7 Em7 Dm7 Em7 F Emaj7 G7 C Em G

This system contains the choir and piano accompaniment for measures 4-6. The choir part is in the treble clef, and the piano accompaniment is in the bass clef. The tempo and dynamic markings from the previous system apply. Chord symbols Dm7, Em7, Dm7, Em7, F, Emaj7, G7, C, Em, and G are written above the piano staff. The lyrics 'Have a hol - ly, jol - ly' are written below the choir staff. A large watermark 'FOR PREVIEW ONLY' is overlaid diagonally across the page.

7

Christ - mas; it's the best time of the year!

C6 C#dim7 G9

This system contains the choir and piano accompaniment for measures 7-9. The choir part is in the treble clef, and the piano accompaniment is in the bass clef. The tempo and dynamic markings from the previous system apply. Chord symbols C6, C#dim7, and G9 are written above the piano staff. The lyrics 'Christ - mas; it's the best time of the year!' are written below the choir staff. A large watermark 'FOR PREVIEW ONLY' is overlaid diagonally across the page.

© 1962 St. Nicholas Music, Inc. (renewed)
All Rights Reserved. Used by Permission.

EVEN IF YOU POSSESS A CCLI LICENSE, YOU MAY NOT COPY THIS MUSIC.
If you have questions about CCLI, please call 800/234-2446.

10 *unison*

I don't know if there will be snow, but have a cup of cheer.

unison

10 G F G C#dim F2/D F/G G C

13 Have a hol - ly, jol - ly Christ - mas, and when

13 Cmaj7/E F/G G13 C Fm/C C6

16 you walk down the street,

unison

16 C#dim7 G9 G F

say hel - lo to

9

unison

(slide)

19

and ev - 'ry - one you meet. And
friends that you know_

19

G C#dim7 F²/D F/G G C Dm7 D#dim E

22

oh, ho, the mis - tle - toe, hung where you can

22

F6 Em7 F6

25

see. Some - bod - y is wait - in' for you;_

unison

Tenors only

25

C6 Dm/F Dm7 Am Am/G

28

kiss them once for me! Have a hol - ly, jol - ly

Add Basses

28

D9
F#

Am
E

D

G13

C

Em
G

31

Christ - mas, and in case you did - n't hear,

31

C6

C#dim

G9

34

oh, by gol - ly, have a hol - ly, jol - ly Christ - mas this

34

G

F
G

Em
G

Dm
G

C

C
E

D

G7

37

year!

37

C6 Cmaj7 C6 Dm7 Em7

40

Basses only
p

40

Dm7 Em7 Fmaj7 G7 N.C.
F

Have a hol - ly, jol - ly Christ-mas;

p

43

have a joy - ous, hap - py New Year! Have a hol - ly,

43

46

jol - ly Christ-mas; it's the best time of the year!

46

49 *mp* ALTOS

Musical staff for Altos, measures 49-51. The melody consists of quarter and eighth notes.

Have a hol - ly, jol - ly Christ-mas, and have a

mp (BASSES)

Musical staff for Basses, measures 49-51. The accompaniment features a steady eighth-note bass line.

Have a hol - ly, jol - ly Christ-mas; have a joy - ous,

49

Piano accompaniment, measures 49-51. The right hand features chords and triplets, while the left hand provides a steady bass line.

52

Musical staff for Altos, measures 52-54. The melody continues with quarter and eighth notes.

hap-py New Year! Have a hol - ly, jol - ly Christ-mas; it's the

Musical staff for Basses, measures 52-54. The accompaniment continues with a steady eighth-note bass line.

hap-py New Year! Have a hol - ly, jol - ly Christ-mas; it's the

52

Piano accompaniment, measures 52-54. The right hand features chords and triplets, while the left hand provides a steady bass line.

55

Musical staff for Altos, measures 55-57. The melody concludes with quarter notes.

best time of the year!

Musical staff for Basses, measures 55-57. The accompaniment concludes with quarter notes.

best time of the year!

55

Piano accompaniment, measures 55-57. The right hand features chords and triplets, while the left hand provides a steady bass line. A chord symbol G(#5) is present above the right hand in measure 57.

57 *mf* ALTOS

Have a hol - ly, jol - ly Christ-mas, and have a

mf TENORS

8 Have a hol - ly, have a

mf BASSES

Have a hol - ly, jol - ly Christ-mas; have a joy - ous,

57 C6 Am7 $\frac{Am}{C}$ $\frac{F}{A}$ $\frac{C}{G}$ C6 Am7

mf Drums play through rests

60

hap-py New Year! Have a hol - ly, jol - ly Christ-mas; it's the

8 hap-py New Year! Have a hol - ly — Christ - mas; it's the

F G Dm6 $\frac{G}{B}$ $\frac{E}{A}$ C $\frac{G}{B}$ Am $\frac{C}{G}$

hap-py New Year! Have a hol - ly, jol - ly Christ-mas; it's the

11

SOPRANOS *f*

63

Have a hol - ly

(ALTOS)

best time of the year! Have a hol - ly,

(TENORS)

best time of the year! Have a

(BASSES)

best time of the year! Have a hol - ly,

63

D C G E A G7 B C6 N.C. C6

f

66

Christ - mas; have a joy - ous, hap - py New Year!

jol - ly Christ - mas, and have a hap - py New Year!

hol - ly, have a hap - py New Year! Have a

jol - ly Christ - mas; have a joy - ous, hap - py New Year.

66

Dm6 F Dm6 G Am7 G7

69

Have a hol - ly, jol - ly Christ-mas; it's the best time of the year!

Have a hol - ly, jol - ly Christ-mas; it's the best time of the year!

8 hol - ly — Christ - mas; it's the best time of the year!

Have a hol - ly, jol - ly Christ-mas; it's the best time of the year!

69

Dm6 Dm6 G7 Dm7 C6 G7 Am7 C6 Dm7 C6 Dm7 G7 C

72

72

G F# G/A# A/E# Bb/D# C6 Cmaj7 C6

12

molto rit.

Slower; really swing it! ♩ = 120

75

Have a hol - ly, jol - ly

75

Dm7 Em7 Dm7 Em7 Fmaj7 G7 C Em/G

molto rit. *Slower; really swing it!*

78

Christ - mas; it's the best time of the year!

78

Am/C Am7/G Abm7/G Am7/C#dim G7/D

80

unison

I don't know if

80

Dm7/C Ebm7/Bb G7 Ebm7/Gb G7 G7 Gb7/G G7 Dm7

82

there will be snow, — but have a cup of cheer. — Have a

unison

82

G7 Dm7 G7 E2/D E/G G C6 Cmaj7/E E/G G13

85

hol - ly, jol - ly Christ - mas, and when

85

C Em Am C Am7/G Abm7/G Am7

87

you walk down the street, —

87

Am/C C#dim G7/D Dm7/C Ebm7/Bb G7 Ebm7/Gb G7

89 *unison* *unison* *and*

say hel - lo to friends that you know_

89 G7 Gb7/G G7 Dm7 G7 Dm7 G7

91 *accel.* *Tempo I*

ev - 'ry - one you meet. And oh, ho, the

91 F2/D E/G G C Dm7 D#dim C7/E F6

accel. *Tempo I*

94

mis - tle - toe, hung where you can see.

94 Em7 F6 C6

97

Some - bod - y is wait - in' for you;_ kiss them once for

Tenors only

Add Basses

97

Dm F Dm7 Am Am G D9 F# Am E D

100

me! Have a hol - ly jol - ly Christ - mas, and in

100

G Ab Db Fm Ab D#6

103

case you did - n't hear, oh, by gol - ly, have a

103

D#6 Ddim7 Ab9 Ab Gb Ab Fm Ebm Ab

106

hol - ly, jol - ly Christ - mas this year!

Vocal line for measures 106-108. The melody is in a major mode with a key signature of three flats. The lyrics are "hol - ly, jol - ly Christ - mas this year!". The notes are: G4 (quarter), A4 (quarter), Bb4 (quarter), C5 (quarter), Bb4 (quarter), A4 (quarter), G4 (quarter), F4 (quarter), E4 (quarter), D4 (quarter), C4 (half).

106

Db Db/F Eb N.C. Db

Piano accompaniment for measures 106-108. Chords: Db (measures 106-107), Db/F (measure 107), Eb (measures 107-108), N.C. (measure 108), Db (measures 108-109). The right hand has a triplet of eighth notes in measure 109.

109

Oh, by gol - ly, have a hol - ly jol - ly Christ - mas

Vocal line for measures 109-111. The melody is in a major mode with a key signature of three flats. The lyrics are "Oh, by gol - ly, have a hol - ly jol - ly Christ - mas". The notes are: G4 (quarter), A4 (quarter), Bb4 (quarter), C5 (quarter), Bb4 (quarter), A4 (quarter), G4 (quarter), F4 (quarter), E4 (quarter), D4 (quarter), C4 (half).

109

Ab7 Ab Gb/Fm Ab Eb Db/F Eb

Piano accompaniment for measures 109-111. Chords: Ab7 (measures 109-110), Ab (measures 110-111), Gb/Fm (measure 110), Ab (measures 110-111), Eb (measures 111-112), Db/F (measures 111-112), Eb (measures 112-113).

112

this year! Have a

Vocal line for measures 112-113. The melody is in a major mode with a key signature of three flats. The lyrics are "this year! Have a". The notes are: G4 (quarter), A4 (quarter), Bb4 (quarter), C5 (quarter), Bb4 (quarter), A4 (quarter), G4 (quarter), F4 (quarter), E4 (quarter), D4 (quarter), C4 (half).

112

Fm C Gb/Bb Ab Db6 Dbmaj7 Db6

Piano accompaniment for measures 112-113. Chords: Fm (measures 112-113), C (measures 112-113), Gb/Bb (measures 112-113), Ab (measures 113-114), Db6 (measures 113-114), Dbmaj7 (measures 113-114), Db6 (measures 114-115).

115 *ff*
hol - ly, jol - ly Christ - mas this

115 *ff*
Db Dbmaj7 Gb Bb Gb Ab N.C.

118
year!

118 *ff*
Db6 Dbmaj7 Db6 Db9

Rudolph, the Red-Nosed Reindeer

Words and Music by
JOHNNY MARKS

Arranged by Joshua Spacht

14 Sweetly ♩ = 60

E A E^b G Dm F Cm E^b B^b D A7 C#

4 *rit.* *CHOIR: unison mp* *Slower*

You know Dash - er and Danc - er and

Cm F7(#5) Cm7 Dm7

4 *rit.* *Slower*

6 Pranc - er and Vix - en, Com - et and Cu - pid and

E^b6 B^bmaj9 Cm7 Dm7

6

© 1949 St. Nicholas Music, Inc. (renewed)
All Rights Reserved. Used by Permission.

EVEN IF YOU POSSESS A CCLI LICENSE, YOU MAY NOT COPY THIS MUSIC.
If you have questions about CCLI, please call 800/234-2446.

8

Don - ner and Blitz - en; but do you re -

E^b6 *F* *B^bmaj9* *Gm* *D7* *F#* *Fdim7* *Em7(b5)*

10

call the most fam - ous rein - deer of all?

15

E^bmaj9 *B^b6* *D* *B^b6* *C* *D7* *F#* *Gm7* *C7* *F7* *Fdim7* *F7(#5)*

13

Funny, quasi-gospel *♩ = 100*
f unison

Ru - dolf, the red - nosed rein - deer
unison

13

B^b7 *B^bdim7* *B^b7*

Drum fill *f (Drums play through rests)*

16

had a ver - y shin - y nose; and if you ev - er

16

Bb7 Edim7 F7 Fdim7 F7

19

saw it, you would ev - en say it

19

Fdim7 F7

21

glows All of the oth - er rein - deer

21

Bb7 Bb7 Bbdim7 Bb7

24

used to laugh and call him names; they nev - er let poor

24

Bb7 Edim7 F7 Fdim7F7

16 Swing! $\text{♩} = \text{♩}^3$

27

Ru - doph join in an - y rein - deer games.

27

Fdim7 F7 Gm7 Faug Bb9 D7 F#dim7

Swing!

30 *mf smooth and jazzy*

Then, one fog - gy Christ - mas Eve, San - ta came to

30

Ebmaj9 Bbmaj9 Cm7 Faug

mf smooth and jazzy (piano ad lib)

unison

33

say, "Ru - dolph, with your

unison

B♭maj9 G7(♭9) Fmaj9 Dm(4)/F F6/E Cm2/E♭

35

nose so bright, won't you guide my sleigh to - night?"

Am7/D F#dim7 Gm7 C13 C7 F7 Fm7(♭5) F7 N.C.

Straight eighths; funky

38

f *unison*

Then all the rein - deer loved him, and they shout-ed out with

B♭7 B♭dim7 B♭7 Edim7

f (Drums play through rests)

41

glee, "Ru-dolph, the red - nosed rein-deer,

41 F7 Fdim7 F7 Fdim7 F7

44 *unison*

you'll go down in his - to - ry!" *unison*

44 Gb7(b9) Eb9 F F9 Bb7(#9)

17

46

46 Dbmaj9(b5) Eb Bb7(#9)

soulful with syncopated rhythms emphasized

48

Ru - dolf, the red - nosed rein - deer had_

48

$D^{\flat}maj9(\flat 5)$
 E^{\flat}

$B^{\flat}7(\sharp 9)$

50

— a ver-y shin-y nose' and if you ev - er ev - en saw it, you would sure-

50

$D^{\flat}maj9(\flat 5)$
 E^{\flat}

$B^{\flat}7(\sharp 9)$

52

- ly say_ it glows. All of_ the oth - er rein - deer used_

52

$D^{\flat}maj9(\flat 5)$
 E^{\flat}

$B^{\flat}7(\sharp 9)$

54

to laugh and call him names; they nev - er let

Detailed description: This block contains the vocal line for measures 54 and 55. The melody is in a minor key with a key signature of two flats. The lyrics are "to laugh and call him names; they nev - er let". The music features eighth and sixteenth notes with some rests.

54

Dbmaj9(b5)
Eb

Detailed description: This block contains the piano accompaniment for measures 54 and 55. The left hand plays a steady eighth-note bass line. The right hand has chords and some melodic fragments. A chord symbol "Dbmaj9(b5) Eb" is written above the first measure.

55

that poor lit-tle Ru - dolph join in an - y rein - deer games.

Detailed description: This block contains the vocal line for measures 55 and 56. The melody continues with eighth and sixteenth notes. The lyrics are "that poor lit-tle Ru - dolph join in an - y rein - deer games." The music ends with a double bar line.

55

Bb7(#9) Dbmaj9(b5)
Eb

Detailed description: This block contains the piano accompaniment for measures 55 and 56. The left hand continues with eighth notes. The right hand features chords and melodic lines. Chord symbols "Bb7(#9)" and "Dbmaj9(b5) Eb" are present above the first measure.

57 *ff* *Alto cues optional*

Ru - dolph, the red - nosed rein - deer had a ver-y shin-y nose; and if you ev -

Detailed description: This block contains the vocal line for measures 57 and 58. The melody is more rhythmic with eighth notes. The lyrics are "Ru - dolph, the red - nosed rein - deer had a ver-y shin-y nose; and if you ev -". The dynamic marking "ff" and the instruction "Alto cues optional" are written above the first measure.

57

C7(#9) Ebmaj9(b5)
F

ff

Detailed description: This block contains the piano accompaniment for measures 57 and 58. The left hand has a bass line with some rests. The right hand has chords and melodic lines. Chord symbols "C7(#9)" and "Ebmaj9(b5) F" are present above the first measure. The dynamic marking "ff" is written below the first measure.

59

- er ev - en saw_ it, you_ would sure - ly say_ it glows.

59

C7(#9) Ebmaj9(b5)
F

61

(opt. claps on beats 2 and 4)

All of_ the oth - er rein - deer used_ to laugh and call him names; they nev-er let_

61

C7(#9) Ebmaj9(b5)
F

18

63

_ that poor lit-tle Ru - dolph join_ in an - y rein - deer games.

63

C7(#9) Ebmaj9(b5)
F

65 *mf* smooth; straight quarters

Then, one fog - gy Christ-mas Eve, San - ta came to

F maj9 C maj9 Dm7 G7(#5)

65 *mf* smooth; straight quarters

68 *unison*

say, "Ru - dolph, with your nose so bright,

unison

C maj9 A7(b9) G maj9 Em(9) G Gb Dm2 E7(b9) G#dim7

68

Resume swing *f unison*

71 won't you guide my sleigh to-night?" Then all the rein - deer

f unison

N.C. C7

71 *gliss.*

Drums *f Resume swing*

74
 loved him, and they shout-ed out with glee,

74
 Cdim7 C7 F#dim7 G7 Gdim7 G7

77 *unison*
 "Ru - dolph, the red - nosed rein - deer, you'll go
unison

77
 Gdim7 G7 N.C. Cmaj7 G N.C. Dm7 G

80
 down in his to

80
 N.C. G6 N.C. Fmaj7 G N.C. G7 N.C. C6 G N.C. G9 N.C. G7(#5)

83

ry!"

Detailed description: This block shows the vocal line for measures 83 and 84. The music is written on a grand staff with a treble clef. The melody consists of a half note G4, a quarter note A4, a half note B4, and a quarter note C5. The lyrics "ry!" are positioned below the notes. A large slur covers the entire phrase.

83

N.C. C9

Detailed description: This block shows the piano accompaniment for measures 83 and 84. The music is written on a grand staff with a treble clef. Measure 83 is marked "N.C." (No Chords). Measure 84 begins with a C9 chord. The piano part features a bass line with quarter notes and a treble line with chords and a melodic line. A dynamic marking of *ff* is present in measure 84.

85

ff

Ru - doph!

Detailed description: This block shows the vocal line for measures 85 and 86. The music is written on a grand staff with a treble clef. The melody starts with a half note G4, followed by a quarter note A4, a half note B4, and a quarter note C5. The lyrics "Ru - doph!" are positioned below the notes. A dynamic marking of *ff* is present at the beginning of measure 85. A large slur covers the entire phrase.

85

Detailed description: This block shows the piano accompaniment for measures 85 and 86. The music is written on a grand staff with a treble clef. Measure 85 features a bass line with quarter notes and a treble line with chords. Measure 86 features a bass line with quarter notes and a treble line with chords. A dynamic marking of *ff* is present at the beginning of measure 85.

The Twelve Days of Christmas

TRADITIONAL ENGLISH
 Arranged by David T. Clydesdale

Festive ♩ = 120

19

Chords: Eb Bb, Cm Bb, Gm Bb, Cm Bb, Fm Bb, Cm Bb, Fm Bb, Eb Bb, Fm Bb

The piano introduction consists of two staves in 4/4 time. The right hand starts with a series of chords and eighth notes, while the left hand provides a simple bass line. The tempo is marked 'Festive' at 120 beats per minute. A dynamic marking of *f* (forte) is present.

WOMEN: unison
mf

3

On the first day of Christ - mas, my

Chords: Eb Bb, Fm Bb, Eb Bb, Fm Bb, Eb Bb, Fm Bb, Gm Bb, Fm Bb, Gm Bb, Ab Bb, Eb, Fm7

The first system of the vocal line shows the beginning of the song. The vocal line is in unison for women and starts with a rest for three measures. The piano accompaniment begins in measure 3. The lyrics are 'On the first day of Christ - mas, my'. The dynamic marking is *mf* (mezzo-forte).

6

true love gave to me a par - tridge in a pear tree. —

Chords: Bb7sus, Bb7, Eb, Eb, Eb7sus, Eb, Fm7, Eb Bb, Bb, Eb7sus, Eb

The second system continues the vocal line. The lyrics are 'true love gave to me a par - tridge in a pear tree. —'. The piano accompaniment continues with chords and eighth notes. The dynamic marking is *mf*.

6

On the

The third system shows the beginning of the next line of the piano accompaniment. The lyrics 'On the' are visible. The piano part continues with chords and eighth notes.

Arr. © 2014 Word Music, LLC (ASCAP)
 All Rights Reserved.

EVEN IF YOU POSSESS A CCLI LICENSE, YOU MAY NOT COPY THIS MUSIC.
 If you have questions about CCLI, please call 800/234-2446.

9

sec - ond day of Christ - mas, my true love gave to me

9

E \flat E \flat /D C \flat Fm \flat /A \flat C \flat /G Fm E \flat B \flat 7/D E \flat

11

and a partridge in a pear
two turtle doves

11

Gm/B \flat B \flat 7/A \flat E \flat /G Fm7 E \flat /B \flat B \flat

13

unison

tree. On the third day of Christ - mas, my

13

E \flat sus E \flat E \flat /G E \flat sus/F E E/D \sharp C \sharp m

Classical feel (slightly detached)

15

true love gave to me three French_ hens,

15

F#m F#m/B E B B7

17

and a par - tridge_ in a pear
two tur - tle doves,

17

Bunis.

G#m/B B7/A E/G# F#m7 E/B B

19

tree...
On the fourth day of Christ-mas, my true love gave to me

19

Esus E E/B Esus/B E E/D# C#m C#m/B F#m/A F#m B7 E

22

three French hens, and a
four call - ing birds, two tur - tle doves,

N.C. B B7 G#m B7
B A

22

25

par - tridge in a pear tree. On the
unison

25

E/G# F#m7 E/B B7 E

27

Broaden

fifth day of Christ - mas, my true love gave to me

27

F E/b D/b C F/C E/b/B/b D/A E/b/G B/b/F A/E Dm Am/C Gm/B/b

Broaden

29

five gold - en rings,

E A G C_{sus} C

31 *accel.* *a tempo*

three French hens, and a

four - call - ing birds, two - tur - tle doves,

F E A B \flat B \flat B \flat A Gm7 N.C. Am C7 C B \flat

31 *accel.* *a tempo*

34 *unison*

par - tridge in a pear tree. On the

E A Gm7 E C C

34 *tr*

36

sixth day of Christ - mas, my true love gave to me

36

F F^{sus} F

Classical feel (slightly detached)
(cues may be played for an easier option)

38

six geese a-lay-ing, five gold - en rings.

38

C C^b F^A G C^{sus} C

41

On the sev - enth day of Christ - mas, my

41

D^b G^b F^{G^b} E^bm E^bm D^b

43

true love gave to me

sev - en swans a - swim-ming.

43

Abm Cb Abm Db7 Gb Db Db7

Flowing

45

six geese a - lay - ing, five gold - en

45

Db Db7 Db Cb Gb Bb Ab

47

Warmer

rings. On the

47

Db sus Db Absus Db

Flowing

49

eighth day of Christ - mas, my true love gave to me

49

G \flat B \flat 7 F E \flat m A \flat m E \flat m A \flat m D \flat 7 G \flat

51

eight maids a - milk - ing,

51

sev - en swans a - swim - ming,

Flowing

53

six geese a-lay-ing, five gold - en rings.

53

D \flat D \flat 7 D \flat C \flat G \flat B \flat A \flat D \flat sus D \flat

21

56 *Broaden*

On the ninth day of Christ - mas, my

56 *Broaden*

accel.

eight maids a-milk-ing,

true love gave to me nine la-dies danc-ing,

58 *accel.*

61 *a tempo*

six geese a-lay-ing, five gold - en

sev - en swans a-swim-ming,

61 *Flowing*

a tempo

58 *accel.*

8 *a tempo*

61 *Flowing*

a tempo

58 *accel.*

61 *a tempo*

61 *Flowing*

a tempo

61 *a tempo*

61 *Flowing*

a tempo

61 *Flowing*

a tempo

64 *unison*

rings. On the tenth day of Christ - mas, my

64 D^{sus} D D C G B G^{sus} A G G F# E^m

Classical feel (slightly detached)

67 true love gave to me ten lords a-leap-ing,

67 Am D9 G D Eb D D G D D

nine la-dies danc-ing,

70 eight maids a-milk-ing, six geese a-lay-ing,

70 D7(no3) D D7 D D7 D C

Flowing

22

Broaden

73

five gold - en rings. On the e -

73

G/B A Dsus D Eb N.C.

73

Broaden

76 *unison*

lev - enth day of Christ - mas, my true love gave to me

e -

A^b A^b/G^b F^b E^b A^b G^b F C G^b D^b C G Fm C^m E^b B^{bm} D^b

76

78 *accel.*

ten lords a - leap - ing,

lev - en pip - ers pip - ing,

A^b/C E^b F^b E^b F^b E^b

78

accel.

80

eight maids a-milk-ing,

nine la-dies danc-ing,

sev-en swans a-swim-ming,

Flowing

80

E \flat A \flat E \flat E \flat E \flat 7(no3) E \flat E \flat 7

83

six geese a-lay-ing, five gold-en rings.

a tempo rit.

83

E \flat E \flat 7 E \flat D \flat C B \flat E \flat sus E \flat

a tempo rit.

86

On the

Broader, majestic ff

86

A \flat E \flat B \flat m E \flat A \flat E \flat D \flat E \flat A \flat E \flat D \flat E \flat D E A E D E E N.C.

Broader, majestic

88

twelfth day of Christ - mas, my true love gave to me

A A G# F#m C#sus F#m Bm A C# E7sus D E A N.C.

88

90

twelve drum-mers drum-ming,
e - lev-en pip - ers pip - ing,

90

93

accel.

ten lords a - leap - ing,

93

ten lords a - leap - ing,
nine la - dies danc - ing,

E F E F E E A E E

accel.

95

eight maids a - milk - ing,

sev - en swans a - swim - ming,

95

E7(no3) E E7

Flowing

97

rit.

24

six geese a-lay-ing, five gold-en rings,

97

E E7 E D A C# B Esus E

rit.

100

Slower ♩ = 92

four call - ing birds, three French hens,

100

E7/D A/C# E/B A Bm A/C# E F#m D Bm D/A

Slower

103

two tur-tle doves, and a par - tridge

103

E B E sus A C#m G# F#m6 E E D E B D A E F# A Bm D C# D

106

in a pear tree!

Fast four ♩ = 150

106

A E E Eunis. A E A E A E A E

Fast four

109

109

A E A E A E A E A

FOR PREVIEW ONLY

Christmas Is

Words and Music by
FRANCESCA BATTISTELLI,
IAN ESKELIN and TONY WOOD
Arranged by Daniel Semsen

25 **Rubato** ♩ = 125

mp

Gm Daug F# Bb2 F C2 E

Female SOLO *mp*

Christ-mas is mu - sic and

Ebmaj7 Eb F Bb

6 *molto rit.*

fam - ly in town. Christ-mas is Snoop - y and Char - lie Brown.

Male SOLO *mp*

6 D It's

molto rit.

© 2012 Word Music, LLC (ASCAP), Francesca Music (ASCAP),
Wordspring Music, LLC (SESAC), Early Service Music (SESAC).
All rights on behalf of itself and Francesca Music admin. by Word Music, LLC.
All rights on behalf of itself and Early Services Music admin. by Wordspring Music, LLC/
Sony/ATV Music Publishing LLC, Songs from Exit 71.
All rights on behalf of Sony/ATV Music Publishing, LLC and
Songs from Exit 71 admin. by Sony/ATV Music Publishing LLC, 8 Music Square West, Nashville, TN 37203.
International Copyright Secured. All Rights Reserved. Reprinted by Permission of Hal Leonard Corporation.

EVEN IF YOU POSSESS A CCLI LICENSE, YOU MAY NOT COPY THIS MUSIC.
If you have questions about CCLI, please call 800/234-2446.

9 A tempo ♩ = 120

Musical notation for the first system. The vocal line is in the treble clef, and the piano accompaniment is in the bass clef. The key signature has two flats (Bb and Eb). The tempo is marked 'A tempo' with a quarter note equal to 120 beats per minute. The system starts at measure 9. The piano accompaniment features a triplet of eighth notes in the right hand and a triplet of eighth notes in the left hand.

an - ti-ci-pat-ing that snow's gon-na fall, and pray-in' for some place to

Musical notation for the second system. The piano accompaniment is in the bass clef. The system starts at measure 9. The piano accompaniment features a triplet of eighth notes in the right hand and a triplet of eighth notes in the left hand. The notes Eb2 and Gb are indicated above the staff.

12 ♩ = 133

Musical notation for the third system. The vocal line is in the treble clef, and the piano accompaniment is in the bass clef. The key signature has two flats (Bb and Eb). The tempo is marked '♩ = 133'. The system starts at measure 12. The piano accompaniment features a triplet of eighth notes in the right hand and a triplet of eighth notes in the left hand.

It's Mom go-ing crazy_ 'cause the tur-key got burned.

park at the mall._

It's

Musical notation for the fourth system. The piano accompaniment is in the bass clef. The system starts at measure 12. The piano accompaniment features a triplet of eighth notes in the right hand and a triplet of eighth notes in the left hand. The notes F and Gm are indicated above the staff. The dynamic marking 'mf' is present.

Musical notation for the fifth system. The vocal line is in the treble clef, and the piano accompaniment is in the bass clef. The key signature has two flats (Bb and Eb). The system starts at measure 15. The piano accompaniment features a triplet of eighth notes in the right hand and a triplet of eighth notes in the left hand.

say - ing thanks_ for some gift_ you'll re - turn._

Musical notation for the sixth system. The piano accompaniment is in the bass clef. The system starts at measure 15. The piano accompaniment features a triplet of eighth notes in the right hand and a triplet of eighth notes in the left hand. The notes Daug and F# are indicated above the staff.

DUET: unison

26

17

Christ-mas is car - ol - ing kids at your door. It's pa - per and rib - bon all

(harm.)

E_b Cm7

17

20

o - ver the floor.

Moderate shuffle ♩ = 32

f CHOIR

Christ - mas is com - ing!

F_{sus} B_b

20

f Moderate shuffle

FOR PREVIEW ONLY

23 *unison*

Christ - mas _____ is near. I've been count - ing

unison

23 *Bb* *Daug*
Eb *F#*

26 down the days all year. Christ-mas is al-most here!

26 *Bb* *C7* *3* *Fsus*
F *E*

29

27

29 *Bb* *Eb* *C7* *F7* *Bb* *Eb*

32 *unison*

Christ-mas is roof-tops cov-ered in lights. It's "A-

unison

C7 F7 B \flat B \flat C B \flat C \sharp

mf

35 way in a Man-ger," "It's a Won-der-ful Life." Christ-mas is car-ing for

D7 D7/F D7/F \sharp Gm7

38 *unison*

those who've got noth-ing. It's drop-ping your change in the

Gm7 D Gm7 F Eb2

40 *f*

bell ring - er's buck - et. Christ - mas is com - ing!

40 *Fsus* *Bb* *f*

43 *unison*

Christ - mas is near... I've been count - ing

unison

43 *Bb* *Eb* *Gm* *Daug* *F#*

46

down the days all year. Christ-mas is al-most here!

46 *Bb* *F* *C7* *E* *Eb2* *Fsus*

49

Musical notation for measures 49-51, piano part. Treble and bass clefs. Measure 49 has a whole note chord. Measures 50-51 have whole notes with stems.

49

Gm Gm Gm A Gm Bb G7 B C7 Bb D

Musical notation for measures 49-51, vocal part. Treble clef. Measure 49 has a whole note chord. Measures 50-51 have eighth notes with stems. Trills are indicated above notes in measures 50 and 51.

52

Musical notation for measures 52-54, piano part. Treble and bass clefs. Measures 52-54 have whole notes with stems.

52

Cdim Eb C7 E Eb2

Musical notation for measures 52-54, vocal part. Treble clef. Measure 52 has a whole note chord. Measures 53-54 have eighth notes with stems. Trills are indicated above notes in measures 53 and 54.

55

28

mf unison

Musical notation for measures 55-56, vocal part. Treble clef. Measure 55 has a whole note chord. Measure 56 has eighth notes with stems. Trills are indicated above notes in measure 56.

Christ-mas is all of these

55

F7sus Bb

Musical notation for measures 55-56, piano part. Treble and bass clefs. Measure 55 has a whole note chord. Measure 56 has a whole note chord. A fermata is placed over the chord in measure 56.

58

fun things for sure; but Christ-mas is real-ly, oh, so much more.

mf unison

This system shows the vocal line starting at measure 58. The melody features three triplet markings over the notes. The piano accompaniment is mostly rests, with a few notes appearing at the end of the system.

58

D

It's

This system shows the piano accompaniment for measures 58-60. The right hand has chords, and the left hand has a triplet of eighth notes. A chord change to D major is indicated above the staff.

61

Christ-mas

This system shows the vocal line for measures 61-63. The piano accompaniment continues with triplet markings in the bass line.

61

Gm7

Fsus

good news of hope for the whole world, be-cause Christ-mas

This system shows the piano accompaniment for measures 61-63. The right hand has chords, and the left hand has a steady bass line. Chord changes to Gm7 and Fsus are indicated above the staff.

64

f

Christ-mas is Je - sus!

This system shows the vocal line for measures 64-66. The piano accompaniment features a strong, rhythmic accompaniment with a dynamic marking of *f* (forte).

64

Bb Eb C7 F7

This system shows the piano accompaniment for measures 64-66. The right hand has chords, and the left hand has a steady bass line. Chord changes to Bb, Eb, C7, and F7 are indicated above the staff.



29

67

Oh, Christ - mas

67

B \flat Eb C7 F7 B \flat

70

is com - ing! Christ - mas is near...

70

B \flat Eb

73

unison

I've been count - ing down the days all year...

unison

73

Gm Daug F \sharp B \flat /F C7/E Eb

76

Christ-mas is al-most here! Christ-mas is com-ing!

76

Fsus Bb

79

unison

Christ-mas is near. I've been count-ing

unison

79

Bb Eb Gm Daug F#

82

down the days, down the days.

I've been count-ing down the days.

82

Bb F C7 E Eb2 Bb D Dbmaj7 C7

85

I've been count - ing down the days all year.

Vocal line for measures 85-87. The melody is in a B-flat major key signature. The lyrics are "I've been count - ing down the days all year." The notes are: G4, A4, Bb4, C5, Bb4, A4, G4, F4, E4, D4, C4.

85

Cm7 Bb D Eb Eb F Fsus

Piano accompaniment for measures 85-87. The right hand features chords: Cm7, Bb, D, Eb, Eb, F, and Fsus. The left hand plays a steady eighth-note bass line.

88

Christ-mas is al - most here!

Christ-mas is al - most here!

Vocal line for measures 88-90. The melody is in a B-flat major key signature. The lyrics are "Christ-mas is al - most here!". The notes are: G4, A4, Bb4, C5, Bb4, A4, G4, F4, E4, D4, C4. There are triplets of eighth notes in measures 88 and 89.

88

(no rit.) fff

Piano accompaniment for measures 88-90. The right hand has chords with triplets of eighth notes. The left hand has a bass line with triplets of eighth notes. Dynamics include *(no rit.)* and *fff*.

91

Vocal line for measures 91-92. The notes are: G4, A4, Bb4, C5, Bb4, A4, G4, F4, E4, D4, C4.

91

Bb

Piano accompaniment for measures 91-92. The right hand has chords with triplets of eighth notes. The left hand has a bass line with triplets of eighth notes.

Santa Claus Is Comin' to Town

Words and Music by
HAVEN GILLESPIE
and J. FRED COOTS

Arranged by David T. Clydesdale

Fast swing $\text{♩} = 144$ ($\text{♩} = \text{♩}^{-3}$)

30

C6

Am7

Drum lead-in

f

3

WOMEN: unison mf

Oh, you bet-ter watch out,

MEN: unison mf

you

3

Dm7 C6 F6 Am6 Dm7 G13 G Aug7 C6

mf

6

bet-ter not pout, I'm tell-in' you why:
(harm.)

6

bet-ter not cry; I'm tell-in' you why:

F6 C6 F6

© 1934 (Renewed) EMIFEIST Catalog Inc./Toy Town Tunes, Inc. (ASCAP)/Haven Gillespie Music (ASCAP).

All rights on behalf of Toy Town Tunes, Inc. admin. by WB Music Corp./

Exclusive Print rights for EMI FEIST catalog Inc. admin. by Alfred Music.

All rights reserved including public performance. All Rights Reserved. Used by Permission.

EVEN IF YOU POSSESS A CCLI LICENSE, YOU MAY NOT COPY THIS MUSIC.

If you have questions about CCLI, please call 800/234-2446.

9 *f unison*

San - ta Claus is com - in' to town.

9 C6 G Am7 Dm7 G13 C6

12 *mf*

He's mak-in' a list and check-in' it twice,

12 D7sus F Dm7 G13 C F6

15

gon-na find out who's naugh-ty or nice. San - ta Claus is

15 C6 F6 C6/G Am7

who's naugh-ty or nice.

18 *unison*

com - in' to town.

unison

18 Dm7 G13 C Dm7 D#dim7 C6/E He

21 *Stronger*

He knows when you're a - wake.

21 C9 C7 F6 cues: 8va- C9 C7 F6

(cues: opt. piano)

24 He knows if you've been bad or good, so be

24 cues: 8va- 3 Dm7 D9 D7/F# F#m/A D/C G6 G#dim7



27 *unison*

good, for good - ness sake! _____ Oh, you bet-ter watch out, you

unison

Oh, you bet - ter watch out,

27 D A F2 G13 Gaug7 C6

30 bet - ter not cry; bet - ter not pout, I'm tell-in' you why:—

bet - ter not cry; bet - ter not pout, tell-in' you why:—

30 F6 C6 F6 A Fm6 Ab

33 **31**

San - ta Claus is com - in' to town. _____

33 C6/G Am7 Dm7 G7 C6

36 *mf unison* Straight eighths

With lit-tle tin horns

mf unison

36 *mf* Straight eighths

and lit-tle toy drums,

mf Straight eighths

39 *f* Swing

root-y toot toots and rum-my tum tums. San - ta Claus is

f Swing

39 C Bdim Am7 C/G C F6 Fm6 Am7 C6/G Am7

f Swing

42 *unison* *mf*

com - in' to town. With

unison

42 Dm7 G13 C6 D7sus/F Dm7 G13

45 *Straight eighths*

cur-ly-haired dolls el - e-phants, boats, and

that cud-dle and coo,

45 C F C Bdim Am7 C/G C

mf *Straight eighths*

48 *f* *Swing* *unison*

kid-die cars, too, San - ta Claus is com - in' to *unison*

48 F6 Fm6/Ab C6 Am7 Dm7 G13

f *Swing*

51 **32**

town.

The kids in Girl and

51 C6 C9 C7

54

will have a ju - bi - lee. They're

Boy - land

F6 C9 C7 F6 Dm7

54

57

gon - na build a toy - land town all a - round the Christ - mas tree!

unison

unison

57

D9 D7 F#m A D C G6 G#dim7 D/A

60

Oh, you bet-ter watch out, you bet-ter not cry;

Oh! You bet - ter watch out, bet-ter not cry;

60

F2 G13 Gaug7 C6 F6

63

bet - ter not pout, I'm tell - in' you why: - San - ta Claus is

63

C6 F6 A Fm6 Ab C6 G Am7

66

com - in' to town.

33

66

Dm7 G7 C7 C6 F G G

69 *Swing it! ff*

San - ta Claus is com - in' to town! San - ta Claus is

69

C Cm G C F6 Dm7 G C Cm G C

ff Swing it!

72

mak - in' the rounds;_ up to the roof - top, down the

72

Chords: C, G, C, C/E

74

chim - ney, down, - 'cause San - ta Claus is com - in' to town!_

74

Chords: F7, Bb/F, F, F6, F#dim, C6/G, Gau7, G7, C6

76

34

Straight eighths

f unison

76

Chords: C6, C9, C7

f *Straight eighths*

He sees you when you're

79

f unison

He knows when you're a - wake -

sleep - in'.

cues: 8va-

79

F6

C9

C7

F6

81

He knows if you've been bad or good, so be

cues: 8va-

Dm7

81

D9

D7

F#m

D

C

G6

G#dim

84

unison

good, for good - ness sake! Oh, you

unison

Oh, you

84

D

A

F2

G

G13

Aaug7

86 *div.*

bet-ter watch out, you bet-ter not cry; bet-ter not pout, I'm

bet - ter watch out, bet-ter not cry; bet - ter not pout,

bet - ter watch out, bet-ter not cry; bet - ter not pout,

Db6 Gb6 Db6

86

89

tell-in' you why:— San - ta Claus is com - in' to

tell-in' you why:—

tell-in' you why:—

Gb6 Bb Cm6 Bb Db6 Ab Bbm7 Ebm7 Ab7

89

92

35

town.

Db6

92

94 *Swing it! ff*

San - ta Claus is com - in' to town!_

94

94 *ff Swing it!*

Db *Dbm / Ab* *Db / Ab* *Gb6* *Ebm7 / Ab*

96 San - ta Claus is mak - in' the rounds;_

96

96 *Db* *Dbm / Ab* *Db / Ab* *Db / Ab* *Ab*

98 up to the roof-top, down the chim - ney, down,_'cause

98

98 *Db* *Db / F* *Gb7* *Cb / Gb* *Gb* *Gb6* *Gdim7*

100

San - ta Claus is com - in' to town!_

100

Db6 Ab7 Aaug7 Ab7 Db6 Bbm7 Bbm Ab Db

102

Up to the roof - top, down the chim - ney down, _ 'cause

102

F Gb7 Cb Gb Gb6 Gdim7

104

San - ta Claus is com - in' to town!_

unison

104

Db6 Ab7 Bbm Bbsus Aaug7 Ab7 Abunis. Gb2 Ab Db Bbm7 Bbm7 Ab

cues optional

107

San - ta Claus is

Detailed description: This block contains the vocal line for measures 107 and 108. The melody is in a minor key with a key signature of three flats. The lyrics are "San - ta Claus is".

107

Chords: G^b, F^m, E^bm7, D^b/A^b, B^bm

Detailed description: This block contains the piano accompaniment for measures 107 and 108. The left hand plays a steady eighth-note bass line, while the right hand plays chords and moving lines. Chords are indicated above the staff: G^b, F^m, E^bm7, D^b/A^b, and B^bm.

109

com - in' to town!

Detailed description: This block contains the vocal line for measures 109 and 110. The melody continues with the lyrics "com - in' to town!".

109

Chords: E^bm7, A^b, D^b6

Detailed description: This block contains the piano accompaniment for measures 109 and 110. The left hand continues the bass line, and the right hand plays chords and moving lines. Chords are indicated above the staff: E^bm7, A^b, and D^b6.

111

Detailed description: This block contains the piano accompaniment for measure 111. The left hand continues the bass line, and the right hand plays chords and moving lines.

111

Chords: G^b6, A^b7sus / E^b, E^bm7 / A^b, A^b7sus, G^b, D^b, G^b, D^b / G^b, D^b

Detailed description: This block contains the piano accompaniment for measure 111. The left hand continues the bass line, and the right hand plays chords and moving lines. Chords are indicated above the staff: G^b6, A^b7sus / E^b, E^bm7 / A^b, A^b7sus, G^b, D^b, G^b, D^b / G^b, D^b.

FOR PREVIEW ONLY

Nuttin' for Christmas

with

All I Want for Christmas Is My Two Front Teeth

Big Broadway overture ♩ = 100

Arranged by Daniel Semsén

80

Extended Track

NUTTIN' FOR CHRISTMAS (Words and Music by Sid Tepper and Roy C. Bennett)

* Opt. entrance music for Children's Choir (measures 1-49)

Slightly Faster ♩ = 105

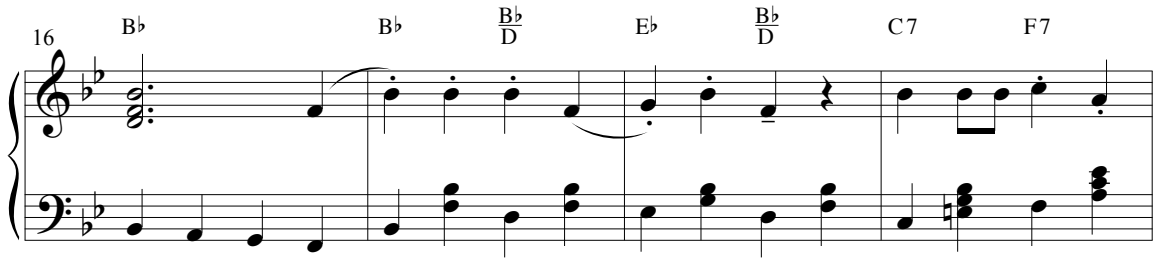
*Performance note: If entrance/exit music for children is not needed in your presentation, begin song at meas. 50, CD point 36, ending with meas. 175.

[Short version = CD Points 36-41; Extended version = CD Points 80-87]

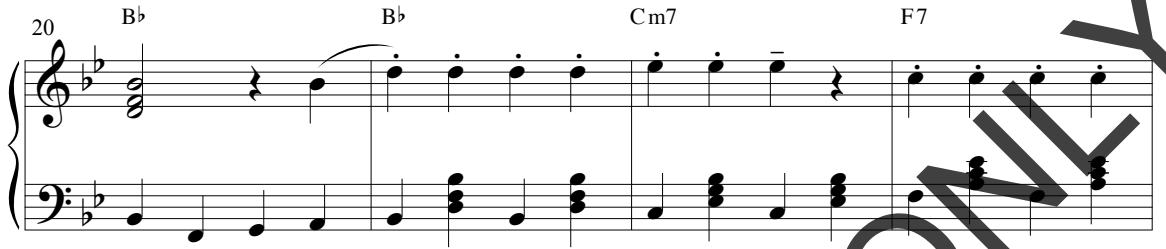
© 1955 (Renewed) Chappell & Co., Inc. Used by Permission of Alfred Music.
All Rights Reserved including Public Performance.

EVEN IF YOU POSSESS A CCLI LICENSE, YOU MAY NOT COPY THIS MUSIC.
If you have questions about CCLI, please call 800/234-2446.

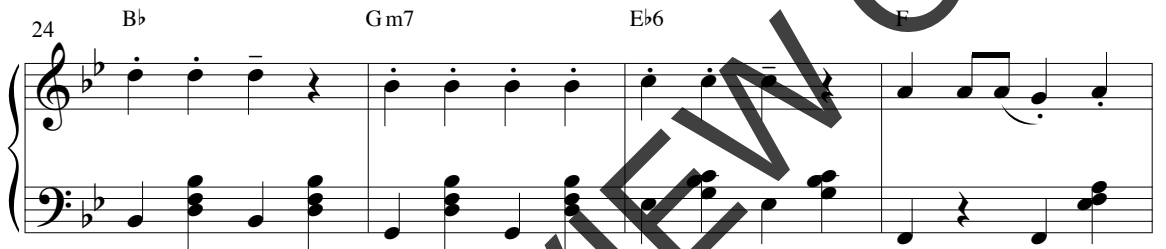
16 B \flat B \flat B \flat / \bar{D} E \flat B \flat / \bar{D} C7 F7



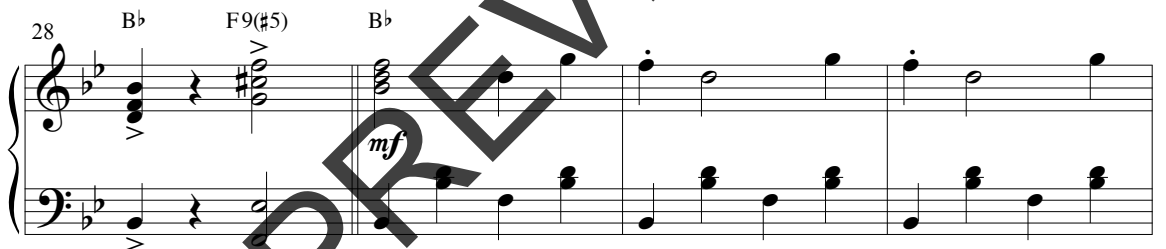
20 B \flat B \flat Cm7 F7



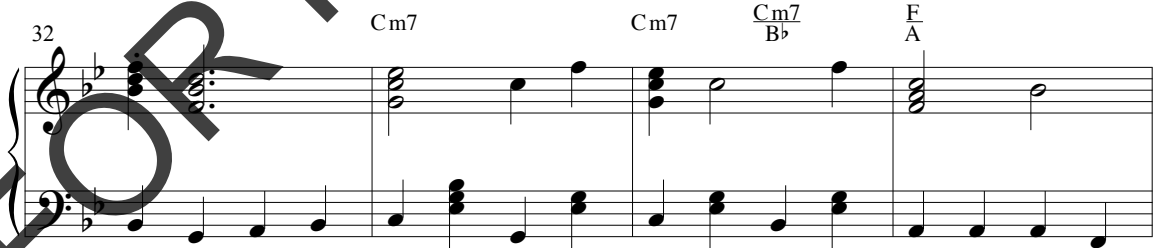
24 B \flat Gm7 E \flat 6 F



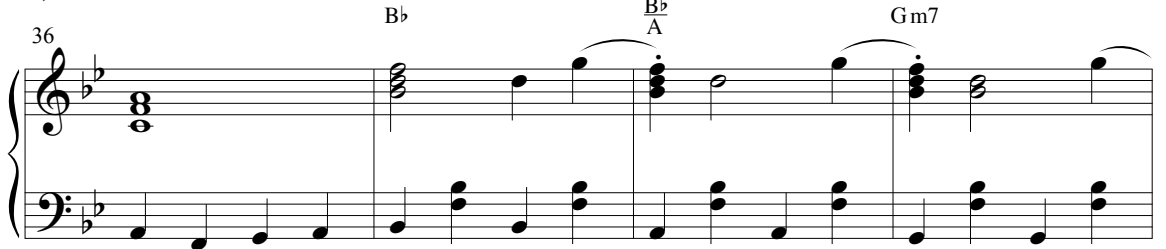
28 B \flat F9(#5) B \flat mf



32 Cm7 Cm7 Cm7/B \flat F/A



36 B \flat B \flat / \bar{A} Gm7



40 F6 Cm7 F7

43 Bb

47 Cm Bb/D Eb F2

rit. *Drum fill*

36

81 (Extended Track)

OPTIONAL SONG BEGINNING

ALL I WANT FOR CHRISTMAS IS MY TWO FRONT TEETH (Words and Music by Don Gardner)

50 Cmaj7 C#dim7 Dm7 G7 Cmaj7 C#dim7

mf

Slow swing $\text{♩} = 70$

CHILDREN'S CHOIR *mf*

53

Dm7 G7 Cmaj7 C#dim7 D7

All I want for Christ-mas is my two front teeth, my

56

two front teeth; yes, my two front teeth. Gee, if I could on-ly have my

56 G7 Cmaj7 Cmaj7/B C7/Bb A7(b9)

37
82 (Extended Track)

59

two front teeth, then I could wish you Mer-ry Christ - mas!

59 D9 Dm9 Fmaj7/G Cmaj7 G7(#5 #9)

62 *f*

All I want for Christ-mas is my two front teeth, my two front teeth; yes, my

f **CHOIR**

62

All I want for Christ-mas is my two front teeth, my two front teeth; yes, my

62 Cmaj7 C#dim7 D7 G7

65

two front teeth. Gee, if I could on - ly have my

two front teeth. Gee, if I could on - ly have my

Detailed description: This system contains the first two lines of music. The top line is a vocal melody in treble clef. The second line is a vocal line with lyrics. The third line is a piano accompaniment in bass clef. The lyrics are: "two front teeth. Gee, if I could on - ly have my two front teeth. Gee, if I could on - ly have my".

65 Cmaj7 G7(b9) Cmaj7 A7(b9)

Detailed description: This system shows the piano accompaniment for the first system. It consists of two staves: a treble clef staff with chords and a bass clef staff with a simple bass line. Chord labels above the treble staff are Cmaj7, G7(b9), Cmaj7, and A7(b9). The treble staff has some notes and rests, while the bass staff has a steady eighth-note accompaniment.

67

two front teeth, then I could wish you Mer-ry Christ-mas! It

two front teeth, then I could wish you Mer-ry Christ-mas!

Detailed description: This system contains the second two lines of music. The top line is a vocal melody in treble clef. The second line is a vocal line with lyrics. The third line is a piano accompaniment in bass clef. The lyrics are: "two front teeth, then I could wish you Mer-ry Christ-mas! It two front teeth, then I could wish you Mer-ry Christ-mas!".

67 D9 Dm9 Fmaj7/G Cmaj7

Detailed description: This system shows the piano accompaniment for the second system. It consists of two staves: a treble clef staff with chords and a bass clef staff with a simple bass line. Chord labels above the treble staff are D9, Dm9, Fmaj7/G, and Cmaj7. The treble staff has some notes and rests, while the bass staff has a steady eighth-note accompaniment.

70

seems so long since I could say *Sis - ter Su - sie sit - tin' on a

mf unison

Ooo

unison

70 F6 Dm7 Em7 Dm7 Em7

mf

73

this - tle! Gosh, oh, gee, how hap - py I'd be, if

73 Dm7 Em7 E9 Am7 C6 Am7

*May be pronounced, "thith-ter thu-thee thit-tin' on a thi-thul."

76

I could on - ly whis-tle. All I want for Christ-mas is my

All I want for Christ-mas is my

76 D9 D9 D9 D9 G9sus Cmaj7 Cdim7
C B A

79

two front teeth, my two front teeth; yes, my two front teeth.

two front teeth, my two front teeth; yes, my two front teeth.

79 D7 G7 Cmaj7 Dm7 D#dim7 Cmaj7
E

*Straight eighths
poco rit.*

82

Gee, if I could on-ly have my two front teeth, then I could wish you Mer-ry

Gee, if I could on-ly have my two front teeth, then I could wish you Mer-ry

*Straight eighths
poco rit.*

Gee, if I could on-ly have my two front teeth, then I could wish you Mer-ry

Gee, if I could on-ly have my two front teeth, then I could wish you Mer-ry

82

C C7 F $\frac{A7(b9)}{E}$ Dm7 G9sus

*Straight eighths
poco rit.*

85

Christ - mas!

Christ - mas!

85

legato
Straight eighths
mp

più mosso

89

rit.

38

83 (Extended Track)

NUTTIN' FOR CHRISTMAS (Words and Music by Sid Tepper and Roy C. Bennett)

CHILD'S SOLO 1

*mf*94 In two, brightly $\text{♩} = 96$

94 *E \flat* *E \flat*

mf

I broke my bat on

CHILD'S SOLO 2

mf

97

John - ny's head; some - bod - y snitched on me! I

97 *A \flat* *E \flat* *F7* *B \flat 7* *E \flat*

100

had a frog in sis - ter's bed; some - bod - y snitched on

100 *E \flat* *A \flat* *E \flat* *F7* *B \flat 7*

CHILD'S SOLO 3

mf

103

me! I spilled some ink on Mom-my's rug.

103 Eb Eb Fm7

CHILD'S SOLO 4

106

I made Tom-my eat a bug. Bought some gum with a

106 Bb7 Eb Cm7

CHILDREN'S CHOIR

f

109

pen - ny slug; some - bod - y snatched on me! Oh,

109 Ab6 Bb7 Bb9 Bb7 Eb Bb7(#5)

39

84

(Extended Track)

112

I'm get - tin' nut - tin' for Christ - mas.

CHOIR: unison mf

No,

112

E \flat

E \flat maj7

E \flat 6

115

Mom - my and Dad - dy are mad.

nut - tin'!

So

115

E \flat maj7

Fm7

B \flat 7

FOR PREVIEW ONLY

119

I'm get - tin' nut - tin' for

mad!

119

E \flat E \flat ma7

122

Christ-mas, 'cause I ain't been nut - tin' but

No, nut - tin' You ain't been nut - tin' but

122

E \flat 6 E \flat maj7 Fm7 B \flat 13(b9)

126

bad.

bad.

You put a tack on

126

E^b B7 A C[#] B7 D[#] E

129

Some - bod - y snitched on me!

teacher's chair. You

129

A E F[#]7 B7 E

132

Some - bod - y snitched on

tied a knot in Su - sie's hair.

132

E A E F#7 B7

135

me!

You did a dance on Mom - my's plants,

135

E E F#m7

FOR PREVIEW ONLY

138

climbed a tree and tore your pants, filled the sugar

138 B7 E Cm7

40

85 (Extended Track)

141

f

Some - bod - y snitched on me! Oh,
bowl with ants! Oh,

141 A6 B7 B9 B7 E B9(#5)

144

I'm get - tin' nut - tin' for Christ - mas.

You're get - tin' nut - tin', no, nut - tin'.

144

E Emaj7 E6 Emaj

148

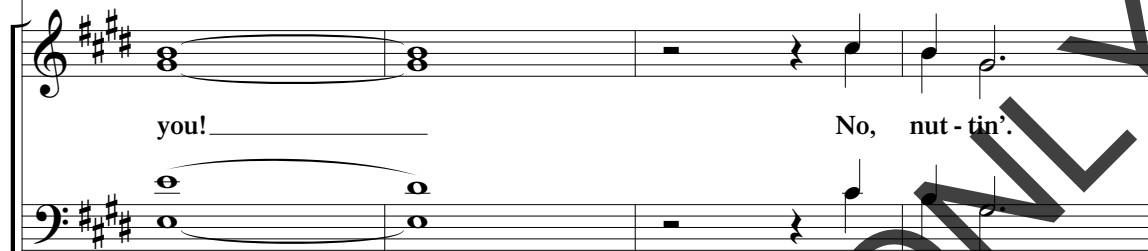
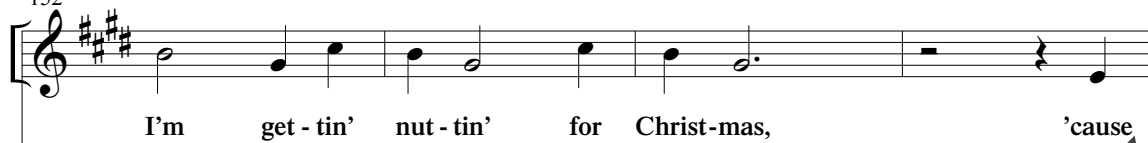
Mom - my and Dad - dy are mad.

We're so mad at

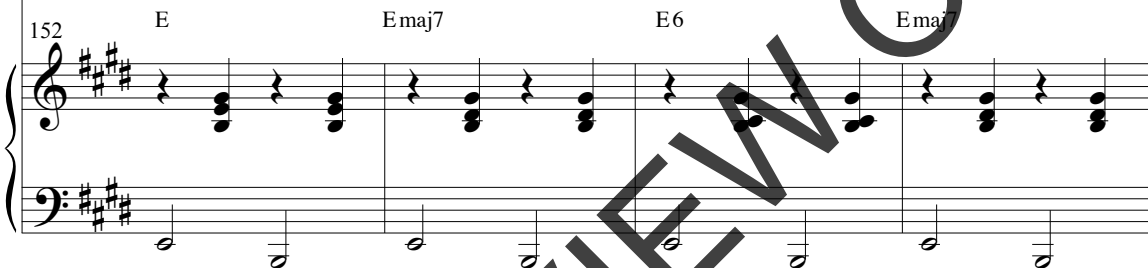
148

F#m7 B7

152



152

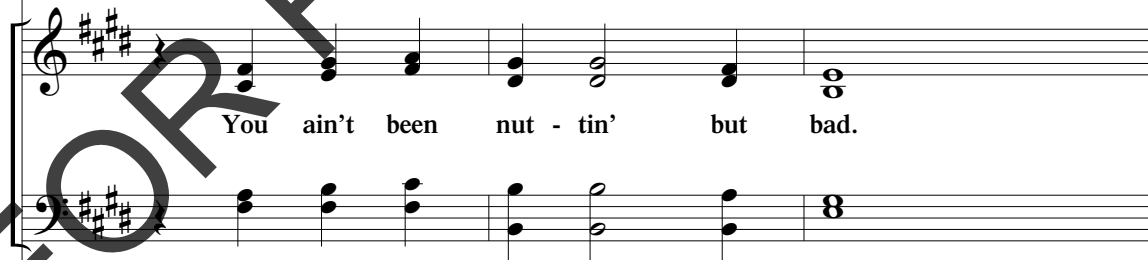


41

86

(Extended Track)

156



156



159

So you'd bet-ter be good what - ev - er you do, 'cause
unison
 So you'd bet-ter be good what - ev - er you do, 'cause
unison

159

F#m7 B E C#7

162

if you're bad, I'm warn - ing you: you'll get
 if you're bad, I'm warn - ing you: you'll get

162

F#m7 B7 G#m7 C#7 F#m7

165

nut - tin' for Christ - mas. Oh,

nut - tin' for Christ - mas.

165 B7 E

168

you'll get nut - tin' for

You will get nut - tin' for

168 F#m7 B7

FOR PREVIEW ONLY

172

Christ - mas!

Christ - mas!

172

E

ff

87 Extended Track
 Slightly Faster $\text{♩} = 110$
 Opt. exit music for Children's Choir

176

C B \flat /C C B \flat /C C

ff

180

F Fmaj7 F6 Fmaj7

f

184

Gm7 C7

188 F Fmaj7 F6 Fmaj7

192 Gm7 C13(b9) F

196 Gm7 C F D Gm7 C7

199 Am7 D7 Gm7 C7

203 F2 F

Rockin' Around the Christmas Tree

Words and Music by
JOHNNY MARKS
Arranged by Cliff Duren

42 Rock (no swing) ♩ = 140
N.C.
*

Musical notation for measures 1-3 of the piano introduction. The key signature has one flat (Bb) and the time signature is 4/4. The music is marked with a forte *f* dynamic. The melody is in the right hand, and the bass line is in the left hand.

Musical notation for measures 4-6 of the piano introduction. The key signature has one flat (Bb) and the time signature is 4/4. The music is marked with a forte *f* dynamic. The melody is in the right hand, and the bass line is in the left hand. A C9 chord is indicated at the end of measure 6.

Musical notation for measures 7-10 of the piano introduction. The key signature has one flat (Bb) and the time signature is 4/4. The music is marked with a forte *f* dynamic. The melody is in the right hand, and the bass line is in the left hand. Chords Bb13, A7(#9), Ab7, and G7(b5) are indicated above the staff. Measure 10 is marked with a circled number 43.

Musical notation for the vocal entry, measures 11-13. The key signature has one flat (Bb) and the time signature is 4/4. The music is marked with a forte *f* dynamic. The melody is in the right hand, and the bass line is in the left hand. The lyrics are: "Rock-in' a - round the Christ-mas tree_ at the". Chords C7, B7, and C7 are indicated below the staff.

Musical notation for the piano accompaniment, measures 11-13. The key signature has one flat (Bb) and the time signature is 4/4. The music is marked with a fortissimo *ff* dynamic. The melody is in the right hand, and the bass line is in the left hand. A triplet of eighth notes is indicated in measure 11. Chords C7, B7, and C7 are indicated below the staff.

*Accompaniment track has 2-beat drum pick-up.

© 1958 renewed 1986 St. Nicholas Music, Inc.
All Rights Reserved. Used by Permission.

EVEN IF YOU POSSESS A CCLI LICENSE, YOU MAY NOT COPY THIS MUSIC.
If you have questions about CCLI, please call 800/234-2446.

14

Christ - mas par - ty hop. Mis - tle - toe hung where

Detailed description: This block contains the vocal line for measures 14 and 15. The melody is written on a treble clef staff. Measure 14 contains the lyrics "Christ - mas par - ty hop." and measure 15 contains "Mis - tle - toe hung where". The notes are mostly quarter and eighth notes.

14 G7 F#7 G7 G7 F#7

Detailed description: This block contains the piano accompaniment for measures 14 and 15. It features a treble and bass clef staff. The right hand plays chords and moving lines, while the left hand plays a steady bass line. Chord symbols G7, F#7, and G7 are placed above the staff.

17

you can see, ev - 'ry cou - ple tries to stop.

Detailed description: This block contains the vocal line for measures 17 and 18. The melody is written on a treble clef staff. Measure 17 contains the lyrics "you can see, ev - 'ry cou - ple" and measure 18 contains "tries to stop.". The notes include quarter, eighth, and sixteenth notes.

17 G7 G7 B7 C7 G7(#5#9)

Detailed description: This block contains the piano accompaniment for measures 17 and 18. It features a treble and bass clef staff. The right hand plays chords and moving lines, while the left hand plays a steady bass line. Chord symbols G7, B7, C7, and G7(#5#9) are placed above the staff.

20

Rock-in' a - round the Christ-mas tree, let the Christ - mas spir - it ring.

Detailed description: This block contains the vocal line for measures 20 and 21. The melody is written on a treble clef staff. Measure 20 contains the lyrics "Rock-in' a - round the Christ-mas tree," and measure 21 contains "let the Christ - mas spir - it ring.". The notes include quarter, eighth, and sixteenth notes.

20 C7 B7 C7 G7 F#7

Detailed description: This block contains the piano accompaniment for measures 20 and 21. It features a treble and bass clef staff. The right hand plays chords and moving lines, while the left hand plays a steady bass line. Chord symbols C7, B7, C7, G7, and F#7 are placed above the staff.



23

Lat - er we'll have some pump-kin pie_ and we'll

23

G7 G7 F#7 G7

44

26

do some car - ol - ing. You will get a

mf legato

26

G7 B7 C7 F#7(b5) Fmaj7

mf

29

sen - ti - men - tal feel - in' when you hear__

29

Em7

32 *building* *unison*

voic - es sing - in' "Let's be jol - ly! Deck the halls with *unison*

Am E7 G# Am F#m7(b5) N.C.

32 *building*

35 *f* *unison*

boughs of hol - ly." Rock-in' a - round the Christ-mas tree. Have a *unison*

B7 C7 B7 C7

35 *f*

38

hap - py hol - i - day. Ev - 'ry-one's danc - in'

G7 F#7 G7 G7 F#7

38

41

mer-ri - ly in a new old - fash - ioned way!

41

G7 G7 B7 C7 N.C.

44 *ff*

Rock-in' a - round, Ooo the Christ - mas tree!

44

ff

47

Yeah, rock-in' a - round, Ooo the unison unison

47



45

50 *mf*

Christ - mas tree!_ You will get a

50 F C/E Dm7 C F#7(b5) Fmaj7

mf

53 sen - ti - men - tal feel - in' when you hear

53 Em7

56 *building* *unison*

voic - es sing - in' "Let's be jol - ly! Deck the halls with *unison*

56 Am E7/G# Am/G Am/F# N.C.

building

59 *f*
 boughs of hol - ly." Rock-in' a - round the Christ-mas tree_ at the

59 *f*
 Db Db7 C7 Db7

62 Christ - mas par - ty hop. Mis-tle-toe hung where

62 Ab7 G7 A47 Ab7 G7

65 you can see, - ev - 'ry cou - ple tries to stop.

65 Ab7 Ab7 C7 Db7 Ab7(#5#9)



68 *unison*

Rock-in' a - round_ the Christ-mas tree_ Have a hap - py hol - i - day.

unison

68

D \flat 7 C7 D \flat 7 A \flat 7 G7

71

Ev - 'ry-one's danc - in' mer - ri - ly_ in a

71

A \flat 7 A \flat 7 G7 A \flat 7

74 **46**

new old - fash - ioned way!_ *ff* Rock-in' a - round,

74

A \flat 7 C7 D \flat 7 N.C.

ff

77

Ooo — the Christ - mas tree!_ Yeah,

This block contains the vocal line for measures 77 to 79. It features a treble clef and a key signature of three flats (B-flat, E-flat, A-flat). The melody starts with a whole note chord, followed by a series of eighth and quarter notes. The lyrics are: "Ooo — the Christ - mas tree!_ Yeah,".

77

This block contains the piano accompaniment for measures 77 to 79. It features a grand staff with treble and bass clefs and a key signature of three flats. The accompaniment consists of a steady eighth-note bass line and a treble line with chords and eighth notes.

80

rock-in' a - round, _ Ooo — the Christ - mas tree!_

This block contains the vocal line for measures 80 to 82. The melody continues with eighth and quarter notes. The lyrics are: "rock-in' a - round, _ Ooo — the Christ - mas tree!_".

80

This block contains the piano accompaniment for measures 80 to 82. The accompaniment continues with the same rhythmic pattern as the previous system.

83

Yeah, rock-in' a - round, _ Ooo — the

This block contains the vocal line for measures 83 to 85. The melody includes a double bar line between measures 83 and 84. The lyrics are: "Yeah, rock-in' a - round, _ Ooo — the".

83

This block contains the piano accompaniment for measures 83 to 85. The accompaniment continues with the same rhythmic pattern.

86

Christ-mas tree!_ Yeah, rock-in' a - round,_

Detailed description: This block contains the vocal line for measures 86, 87, and 88. The music is in a key with three flats (B-flat major or D-flat minor) and a 4/4 time signature. The melody consists of eighth and quarter notes. A crescendo hairpin is placed above the staff, starting at measure 86 and ending at measure 88. The lyrics are: "Christ-mas tree!_ Yeah, rock-in' a - round,_".

86

Detailed description: This block contains the piano accompaniment for measures 86, 87, and 88. The piano part features a steady eighth-note bass line in the left hand and a more active eighth-note melody in the right hand. The overall texture is rhythmic and consistent with the vocal line.

89

Ooo — the Christ - mas tree!_

Detailed description: This block contains the vocal line for measures 89 and 90. The melody is mostly sustained notes with a long note in measure 89. A crescendo hairpin is placed above the staff, starting at measure 89 and ending at measure 90. The lyrics are: "Ooo — the Christ - mas tree!_".

89

G^b D^b/_F E^bm7 D^b

Detailed description: This block contains the piano accompaniment for measures 89 and 90. The piano part continues with the eighth-note bass line and melody. Chord symbols are written above the staff: G^b, D^b/_F, E^bm7, and D^b. The music concludes with a final chord and a fermata over the last note.

It Came upon the Midnight Clear

EDMUND H. SEARS

RICHARD S. WILLIS
New Music by
DANIEL SEMSEN
Arranged by Daniel Semsen

Broadly $\text{♩} = 60$

47 N.C.

f *poco rit.*

 $\text{♩} = 105$

5

A^b $A^b \text{ sus}$ $\frac{A^b \text{ sus}}{E^b}$ A^b $\frac{D^b}{A^b}$ A^b $\frac{A^b}{C}$

Driving, mysterious $\text{♩} = 134$

9

D^b E^b $A^b(\text{no}3)$

f

48

 $A^b(\text{no}3)$

12

ff

Arr. © 2014 Word Music, LLC (ASCAP)
All Rights Reserved.

EVEN IF YOU POSSESS A CCLI LICENSE, YOU MAY NOT COPY THIS MUSIC.
If you have questions about CCLI, please call 800/234-2446.

CHOIR: unison
mf with intensity

14

It came up - on the mid - night

14

N.C.

mf

17

clear, that glo -

17

A^b(no3)

20

rious song of old, From

20

A^b(no3)

23

an - gels bend - ing near the earth

Detailed description: This block shows the vocal line for measures 23 to 25. The melody starts on a whole note 'an', followed by quarter notes 'gels', 'bend', 'ing', 'near', 'the', and 'earth'. The notes are mostly half notes and quarter notes with some ties. The key signature has three flats.

23

F \flat E \flat m

Detailed description: This block shows the piano accompaniment for measures 23 to 25. The right hand plays chords and moving lines, while the left hand plays a steady eighth-note accompaniment. Chords are labeled F \flat and E \flat m.

26

to touch their harps of

Detailed description: This block shows the vocal line for measures 26 to 28. The melody continues with 'to touch their harps of'. The notes are mostly half notes and quarter notes with ties.

26

D \flat m E \flat m

Detailed description: This block shows the piano accompaniment for measures 26 to 28. The right hand plays chords and moving lines, while the left hand plays a steady eighth-note accompaniment. Chords are labeled D \flat m and E \flat m.

29

49

gold: "Peace on the

f

Detailed description: This block shows the vocal line for measures 29 to 31. It starts with a measure rest, then 'gold:'. After a double bar line, it says '"Peace on the'. The notes are mostly half notes and quarter notes. A dynamic marking of *f* (forte) is present.

29

A \flat Am

f

Detailed description: This block shows the piano accompaniment for measures 29 to 31. The right hand plays chords and moving lines, while the left hand plays a steady eighth-note accompaniment. Chords are labeled A \flat and Am. A dynamic marking of *f* (forte) is present.

32

earth, good - will to men, from Heav -

Fmaj7 Em7

36

'n's all - gra - cious King!' The

sub. *mp*
unison

unison

D

39

world in sol-ern still-ness lay to hear the an - gels sing.

Slower $\text{♩} = 117$
molto legato

mf $\text{♩} = 134$

Am G(4) Fmaj7 Em7 F G A(no3)

Slower
sub. *p*

mf

43

Am G Fmaj7 Em7 D *tr* (b)

43

ff Driving

47

mf with intensity

For lo, the days are has - t'ning

47

mf with intensity

N.C.

50

or by

50

D(no3)

FOR PREVIEW ONLY

52

proph - ets seen of

52

54

old, When

54

D(no3)

56

with the ev - er - cir - cling

56

Bb

FOR PREVIEW ONLY

58

years _____ shall

58 Am

60

come _____ the time fore -

60 Gm Am

62

told, _____ *f unison*
When

62 D

FOR PREVIEW ONLY

64 *f unison*

When peace shall

64 *f* Ebm Cbmaj7

peace shall o - ver all the earth

67

o - ver all the earth, an - cient splen - dors

its an - cient splen - dors

67 Bbm7

70 *sub. mp* Slower ♩ = 100 *molto legato*

fling, And the whole world send

fling,

70 Ab Ebm Db(4) *sub. p Slower*

Much slower ♩ = 43

73 *rit.* , *unison*

back the song which now the an - gels sing

73 Cbmaj7 Bbm7 Cb Db Eb

rit. *Much slower mp*

76 *ff* *Majestically*

Still through the clo - ven skies they come with

76 Eb F Bb Eb Bb Bb Eb Bb Bb

ff *Majestically*

79

peace - ful wings un - furled, And still their heav - 'n - ly

79 Eb Cm7 F sus F Bb Eb Bb

82

mu - sic floats o'er all the wea - ry world; A -

B \flat E \flat / \flat B \flat E \flat F B \flat

82

85

bove its sad and low - ly plains, they bend on hov - 'ring

D Gm D#m Gm F/C C

85

88

wing, And ev - er o'er its Ba - bel sounds the

Fsus F B \flat E \flat / \flat B \flat E \flat / \flat B \flat B \flat B \flat /D

88

Driving ♩. = 134

91

bless - ed an - gels sing.

unison

91

E♭ F B♭(no3) N.C.

Driving, faster

94

ff

Prince of

94

D(no3) N.C.

ff

97

Peace, on Whom we cast our

97

FOR PREVIEW ONLY

100

ev - 'ry cross and ev - 'ry care,

This block contains the vocal line for measures 100 to 102. The melody is in a major key with two sharps (F# and C#). The lyrics are "ev - 'ry cross and ev - 'ry care,". The music features a mix of eighth and quarter notes with some rests.

100

D(no3)

This block contains the piano accompaniment for measures 100 to 102. The right hand plays chords and moving lines, while the left hand plays a steady bass line. A chord symbol "D(no3)" is written above the right hand in measure 102.

103

Come, en - ter Thou our long - ing

This block contains the vocal line for measures 103 to 105. The melody continues with the lyrics "Come, en - ter Thou our long - ing". The music includes some rests and sustained notes.

103

Bb

This block contains the piano accompaniment for measures 103 to 105. The right hand features a more active melodic line with eighth notes. A chord symbol "Bb" is written above the right hand in measure 104.

106

hearts, and make Thy

This block contains the vocal line for measures 106 to 108. The melody includes the lyrics "hearts, and make Thy". There are significant rests in the vocal line for measures 106 and 107.

106

A m G m

This block contains the piano accompaniment for measures 106 to 108. The right hand plays chords, and the left hand plays a simple bass line. Chord symbols "A m" and "G m" are written above the right hand in measures 106 and 107 respectively.

109

dwel - ing there!

109

Am D

112 *sub. f*

And may we 'mid our dai - ly toil to

112

Am Fmaj7

sub. f

And may we 'mid our dai - ly

116

unison

Thee our prais - es bring,

unison

116

Em7 D

toil our prais - es bring,

119 Slower ♩ = 80 *sub. mp* *molto legato* , *mf*

Un - til on high we learn the song that

119 *Slower* *sub. mp*

Am G(4) Fmaj7 Em7

122 Driving, faster ♩ = 134 *ff*

now the an - gels sing,

122 *mf* Driving, faster *ff*

F G A(no3)

125 *fff*

the an - gels sing!

125 *fff*



Mary, Did You Know?

MARK LOWRY

BUDDY GREENE
Arranged by Daniel Semsen

55

Largo ♩ = 54
 N.C.

mp

(may restrike lightly if necessary)

slower

accel. light, floating, blended
p prime unison
 Altos **

Moderato ♩ = 82

Ma - ry, did you know that your Ba - by - Boy - would

Tenors

accel.

Moderato, faster

*cued alto note throughout is provided as a voicing alternative.

**Performance option: measures 7-15 may be sung by tenors only, all women entering on pick-up to bar 16.

10

one day walk on wa - ter? Ma-ry, did you know that your Ba -

mp

13

by Boy would save our sons and daugh-

15

add Sopranos
mp

ters? Did you know that your Ba - by Boy has

(harm.)

mf

FOR PREVIEW ONLY

18

come to make you new, — and this Child that you — de-liv-
 (mel.)

21

56

- ered — will soon de-liv - er you? Ma-ry, did you —
 (mel.)

add Bases

24

know that your Ba - by — Boy — would

Fm Eb

mp

FOR PREVIEW ONLY

26

give sight to a blind man? Ma - ry, did you

B \flat m C sus C

28

know that your Ba - by - Boy would

Fm E \flat

30

calm the storm with His hand? Did you know -
(harm.)

B \flat m C sus C

32

that your Ba - by_ Boy_ has

Bbm Eb/G

34

walked where an - gels trod, and when you (mel.)

Ab2 Ab/G Fm Abmaj7/Eb

36

kiss your lit - tle Ba - by, you kiss the face of God?

Bbm Csus

39 *rit.* *unison* *Altos* A little more motion ♩ = 92

Oh, Ma - ry, did you know?_

C Fm Eb

rit. *a little more motion*

42 **57** *add Sopranos* *mf*

Oh, Ma-ry, did you know?

Bbm Csus C Fm

45 *f*

Oh, The

Cm Eb Bbm Csus C

More motion ♩ = 98

48

blind will see, the deaf will hear, the

f more motion

Chords: D^b F, E^b F

50

dead will live a - gain The

Chords: Fm, B^b F, N.C.

52

lame will leap, the dumb will speak the

Chords: D^b F, E^b F

54 *ff* *slightly slower*

prais - es of the Lamb!

Fm Csus C

slightly slower

Moderato ♩ = 92

rit. *prime unison* *sub. p Altos ** *a tempo*

57

Ma-ry, did you know that your Ba - by - Boy - is

Tenors

Fm Eb

rit. *p* *a tempo*

60

Lord of all cre - a - tion? Ma-ry, did you know that your Ba-

Bbm Csus Fm

*Performance option: measures 57-65 may be sung by tenors only, all women entering on pick-up to bar 66.

63

- by Boy would one day rule the na -

E \flat B \flat m

65

tions? Did you know (harm.) that your Ba -

add Sopranos
mf

add Basses

C sus C B \flat m

67

by Boy is Heav-en's per - fect Lamb, and the (mel.)

E \flat A \flat 2 E \flat / G Fm7 A \flat maj7
E \flat

70

sleep - ing Child you're hold - ing is the Great

Bbm7

C sus

73

molto rit. *a tempo*
prime unison

I AM

opt. Tenors only

Fm

molto rit.

a tempo

76

molto rit. *pp*

Ooo

add Basses

Ab(add2)
Db

molto rit.



Merry Christmas to You

Words and Music by
DAVID FREY
 and **BEN McDONALD**
 Arranged by *Cliff Duren*

59 With fun energy! ♩ = 105
 N.C.

D(no3)

Female SOLO (with freedom)
mf

Snow-balls fly-in through the air... Crashed my sled, but I___ don't care.

© 2013 Dayspring Music, LLC (BMI), Run Run Milo (BMI)
 and Pencil Prophet Publishing (BMI) All rights admin. by Dayspring Music, LLC.
 All Rights Reserved. Used by Permission.

EVEN IF YOU POSSESS A CCLI LICENSE, YOU MAY NOT COPY THIS MUSIC.
 If you have questions about CCLI, please call 800/234-2446.

9

Noth-in' in__ this world_could make me blue.__

9 G(no3) A(no3) D(no3)

11

Snow-men out on the_front lawn_ lift their heads and sing a - long, _

11

13

"Mer - ry Christ - mas_ to you!__

13 G(no3) A(no3) D(no3)

15

Mer-ry Christ - mas_ to you!'"__

15 G(no3) A(no3) D(no3)

60

CHOIR: unison *mf*

18

Wa

18

G(no3) A(no3) D(no3)

20 *SOLO*

Grand-pa snores loud as a choir... Stock-ings hung a-bove the fire...

ooh Wa ooh.

20

FOR PREVIEW ONLY

22

You got socks_ and I got a__ ka - zoo.__

Ooo_ wa ooh. Wa

22

G(no3) A(no3) D(no3)

24

Cook-ies bak-in' in the stove._ Let's go hang by the mis-tle - toe._

ooh. Wa ooh.

24

26
Mer - ry Christ - mas_ to you.____

Ooo_____ wa ooh.

26 G(no3) A(no3) D(no3)

28 **61**
Mer - ry Christ - mas_ to you.____

Empty vocal and piano staves for the second system.

28 G(no3) A(no3) D(no3) D Em7 D/F#

30 *f* (SOLO joins CHOIR)

Christ - mas on - ly comes_ but once a year. The

30 G A D

f

hap - pi - est_ of days_ is fin - 'lly here. So

32 G A D

come on, sing it out!_ Let's give love that's true.

34 G A D A# Bm

36 *SOLO mf*

Mer-ry Christ-mas_ to you._____

36 G A D(no3)

39 hear a noise up on the roof; it might be the sound of rein-deer hooves. The

39 *mf*

62

41

kids all know, I know it's you - know - who. A -

41 G(no3) A(no3) D(no3)

43

bove it all the an - gels sing,

CHOIR
ff

"Glo-ry, glo - ry to the King!"

43

43

45
Mer - ry Christ - mas_ to you.____

45 G(no3) A(no3) D(no3)

47 Mer - ry Christ - mas_ to you.____

47 G(no3) A(no3) D(no3) D Em7 D/F#

FOR PREVIEW ONLY

49 *f* (SOLO joins CHOIR)

Christ - mas on - ly comes_ but once a year. The

The vocal line for measures 49-50 features a melody in G major. The lyrics are "Christ - mas on - ly comes_ but once a year. The". The melody starts on G4, moves to A4, then B4, and continues with eighth and quarter notes. There are rests in the vocal line for measures 49 and 50.

49 G A D

f

The piano accompaniment for measures 49-50 consists of chords in the right hand and a bass line in the left hand. The chords are G, A, and D. The right hand plays chords in a rhythmic pattern, while the left hand plays a simple bass line. The dynamic is marked *f*.

51 hap - pi - est_ of days_ is fin - 'lly here. So

The vocal line for measures 51-52 features a melody in G major. The lyrics are "hap - pi - est_ of days_ is fin - 'lly here. So". The melody starts on G4, moves to A4, then B4, and continues with eighth and quarter notes. There are rests in the vocal line for measures 51 and 52.

51 G A D

The piano accompaniment for measures 51-52 consists of chords in the right hand and a bass line in the left hand. The chords are G, A, and D. The right hand plays chords in a rhythmic pattern, while the left hand plays a simple bass line.

53 come on, sing it out!_ Let's give love that's true.

The vocal line for measures 53-54 features a melody in G major. The lyrics are "come on, sing it out!_ Let's give love that's true.". The melody starts on G4, moves to A4, then B4, and continues with eighth and quarter notes. There are rests in the vocal line for measures 53 and 54.

53 G A D A# Bm

The piano accompaniment for measures 53-54 consists of chords in the right hand and a bass line in the left hand. The chords are G, A, D, A#, and Bm. The right hand plays chords in a rhythmic pattern, while the left hand plays a simple bass line.

63

ff unison

55

Mer-ry Christ-mas_ to you._____ Fa la la la

unison

55 G A D D

ff

(optional SOLO ad lib suggestion) Mer-ry Christ - mas!

58

la la la la la, Fa la la la la.

58 G A D

61

Fa la la la la la la la, Fa la la la

61 D G A

64 Oh, *f* (SOLO joins)

la. Christ - mas on - ly comes but once a year.

64 D D Em7 D# F# G A

f

66 The hap - pi - est of days is fin - 'ly

66 D G A

68 here So, come on, sing it out! Let's give

68 D G A

64

Oh, —

love that's true. Mer-ry Christ-mas_ to you. —

70 D A/C# Bm G A D D E A D

Christ - mas on - ly comes_ but once a year. The

73 G A D

hap - pi - est_ of days_ is fin - 'lly here.

75 G A D



77

Je - sus, You were born, and You gave love that's true.

77

G A D $\frac{A}{C\#}$ Bm

79

Oh, Mer - ry Christ - mas!

Mer - ry Christ - mas to You!

79

G A Bm

81

Oh, Mer - ry Christ - mas! —

Mer - ry Christ - mas to You! —

81

G A Bm

65

ff unison

83

Mer-ry Christ-mas_ to You!_

Fa la la la

unison

83

G A D D

sub. p *ff*

86

Oh, Mer-ry Christ - mas!

la la la la la, Fa la la la la.

86

G D

89

Fa la la la la la la la la, Fa la la la

89

D G A

FOR PREVIEW ONLY

Mer-ry Christ - mas!

add optional hand claps (on beats 2 and 3)

92

la. Fa la la la la la la la la,

92 D D(no3)

95

Fa la la la la. Fa la la la

95 G(no3) D(no3)

(sim.)

Fa la la— la la.— *mf*

98

la la la la la, Fa la la la la. Wa

Detailed description: This block contains the vocal line for measures 98, 99, and 100. The melody starts with a series of eighth notes, followed by a dotted quarter note, and ends with a melodic phrase. The lyrics are 'la la la la la, Fa la la la la. Wa'. The dynamic marking *mf* is placed at the end of the line.

98

G(no3) A(no3) D(no3)

mf

Detailed description: This block contains the piano accompaniment for measures 98, 99, and 100. The right hand features chords and moving lines, while the left hand provides a steady bass line. Chord markings G(no3), A(no3), and D(no3) are placed above the staff. The dynamic marking *mf* is at the end.

(end claps) Fa la la— la.

101

ooh. Wa ooh. Wa ooh.

Detailed description: This block contains the vocal line for measures 101, 102, and 103. The melody features a 'clap' symbol above the first measure. The lyrics are 'ooh. Wa ooh. Wa ooh.'. The dynamic marking *mf* is at the end.

101

D

ff

Detailed description: This block contains the piano accompaniment for measures 101, 102, and 103. The right hand has chords and moving lines, with a 'D' chord marking above the final measure. The dynamic marking *ff* is at the end.

Give Me Christmas

Words and Music by
DAVID FREY, BEN McDONALD
 and **DAVE BARNES**
 Arranged by David Wise

Big band swing ♩ = 120 ♪ = $\frac{3}{4}$

66 Cmaj9 Em7 Ebm7 Dm7

f

3

Abmaj7 G11 Cmaj9 Em7

6 Ebm7 Dm7 Abmaj7 **67** G11

mf WOMEN: unison

Get out of bed; _____

9 N.C.

mf

3

© 2013 Dayspring Music, LLC (BMI), Run Run Milo (BMI), Pencil Prophet Publishing (BMI)
 All rights on behalf of itself, Run Run Milo and Pencil Prophet Publishing admin. by Dayspring Music, LLC/
 No Gang Music Publishing (ASCAP) (admin. by Songs of Razor and Tie c/o Music Services)
 All Rights Reserved. Used by Permission.

EVEN IF YOU POSSESS A CCLI LICENSE, YOU MAY NOT COPY THIS MUSIC.
 If you have questions about CCLI, please call 800/234-2446.

12

out - side the win - dow there's noth - in' but snow.

14

Run down the stairs; — the smile in my heart.

Cmaj9 Em7 Ebm7 Dm7 Abmaj7

17

has spread down to my toes, — Heav-en knows. —

G 11 Bbmaj9 Bm7(4) Em7

68

Rib-bons of red,
MEN: unison

Am7(b5)

Dm7

G11

Cmaj9

Em7

23

pres-ents as far — as the eye — can see —

E \flat m7 Dm7A \flat maj7

G11

26

in this won - der - land.

The tree is a tow -

Cmaj9

Em7

E \flat m7 Dm7A \flat maj7

29

er of gold and green; — what a won - der - ful scene! —

G11 Bbmaj9 Bm7(4) Em7 Bbmaj9

29

G11 Bbmaj9 Bm7(4) Em7 Bbmaj9

32

All the lights and the toys bring —

f

F/G G/D E/G F#7 Fmaj9

32

F/G G/D E/G F#7 Fmaj9

35

us joy. In the end it's just not e - nough, 'cause what we —

Em7 Dm7 G11 C6 C7sus C7

35

Em7 Dm7 G11 C6 C7sus C7

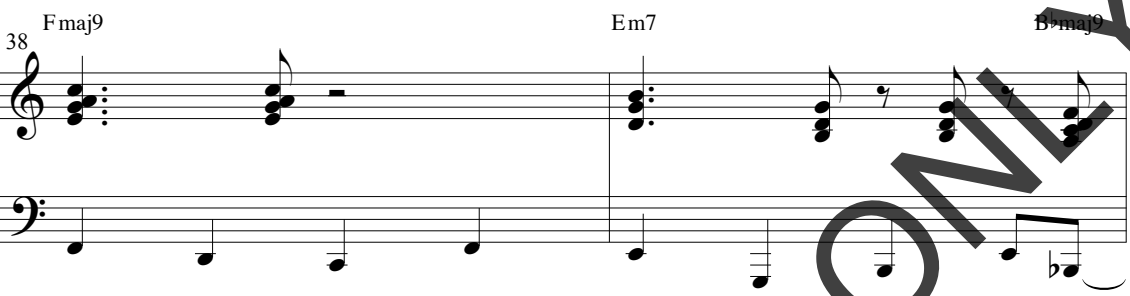
38



— real - ly need and what Christ - mas real - ly means is love..

38

F maj9 Em7 B♭maj9

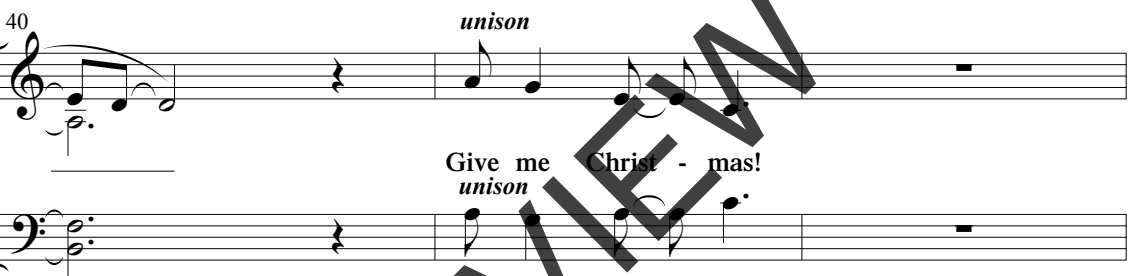


40

unison

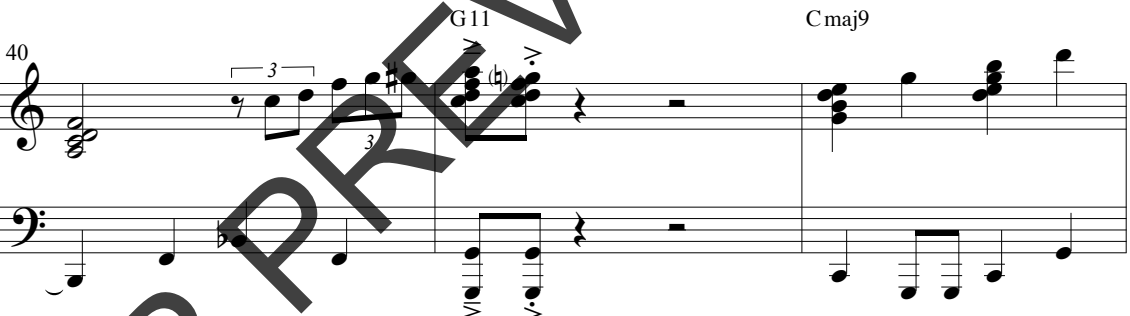
Give me Christ - mas!

unison



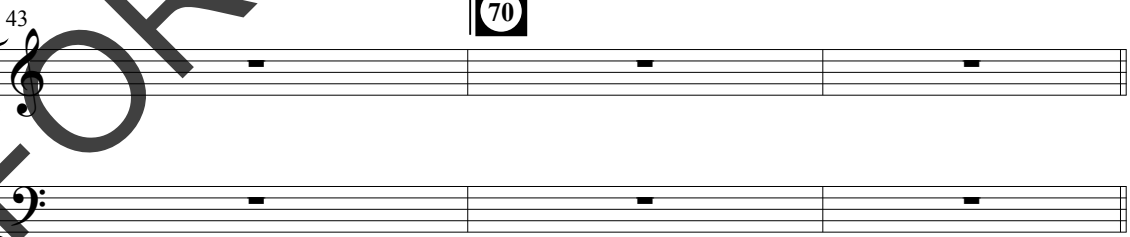
40

G11 Cmaj9



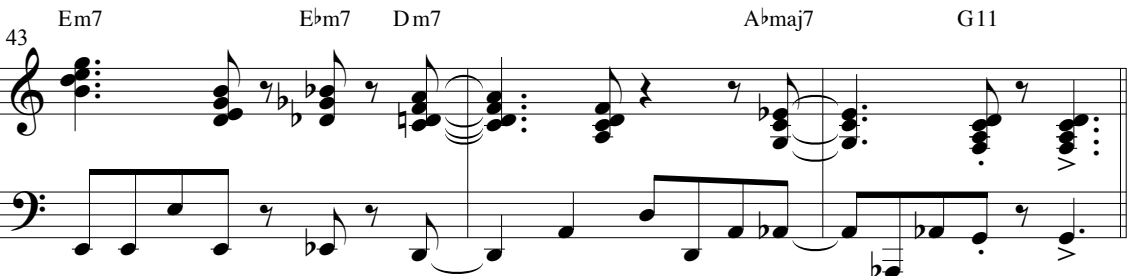
43

70



43

Em7 E♭m7 Dm7 A♭maj7 G11



46 *mf unison*

The ta-ble is set, _____ a house full of friends_

unison

46 C maj9 Em7 Ebm7 Dm7

mf

49 _____ and the fam - i - ly. _____ The fire - side is

49 Abmaj7 G11 Cmaj9 Em7

51 warm: we'll be sing - ing those songs, laugh - ing all

div.

51 Ebm7 Dm7 Am7

53

— night long, 'cause there's one thing we all can a - gree:

G11

B^bmaj9

53

55

f

— All the lights and the toys bring us joy. In the end,

F
GG
DF
G

F#7

Fmaj9

Em7

55

58

— it's just not e - nough, 'cause what we

Dm7

G11

C₉⁶

C7sus

C7

58

60

— real - ly need and what Christ - mas real - ly means is love..

60

F maj9 Em7 B maj9

62

Give me Christ - mas!

62

G11 Fmaj9

65

71

mf smoothly

Oh,

65

G F Em7 Am7

68

gath - er 'round the tree

Dm7 C/E B♭maj9

mf

71

and re-mem-ber what Christ - mas real - ly means.

E/G G Dm7 C/E G11

74

B7(#9) Fmaj9

77

77 Em7 Am7 A♭maj7 G11 C⁶₉ C7sus C7

72

80

80 Fmaj9 Em7 Am7 A♭maj7 G A

83 *f*

All the lights and the toys bring

83 A7 Fmaj9

85

us joy. In the end it's just not e - nough,

85

Em7 Dm7 G11

87

'cause what we real - ly need and what Christ -

87

C⁶ C7sus C7 Fmaj9

89

mas real-ly means is love. Give me Christ - mas!

unison

unison

89

Em7 B^bmaj9 G11

92

92 Fmaj9 Em7 Am7 A♭maj7 G9

95

All the cook-ies and can-dies, the can-dles and car-ols, the

95 C⁶₉ C7sus C7 Fmaj9 Em7

97

stock - ings and the snow.

97 Dm7 Cmaj9

All the

98

tin-sels and trim-mings, the lights are all twink-ling; the world is all a-glow!

98

F maj9 Em7 Dm7 C7sus C

100

All of these things are so beau-ti-ful, won-der-ful; what it real-ly means is love;

100

F maj9 Em7 Dm7 C maj9 Bbmaj9

102

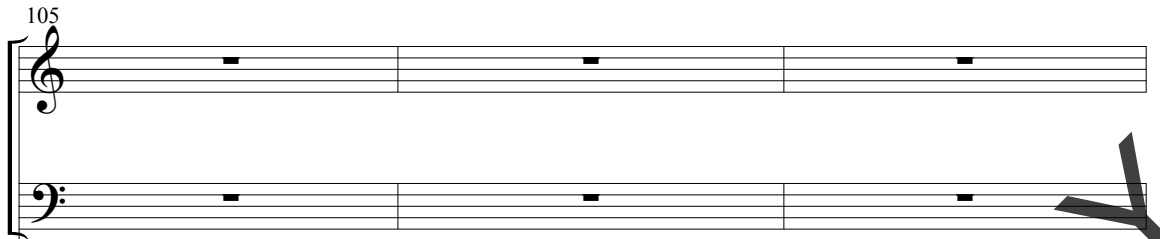
74

love, — love! — Give me Christ - mas!

Dm7 G11

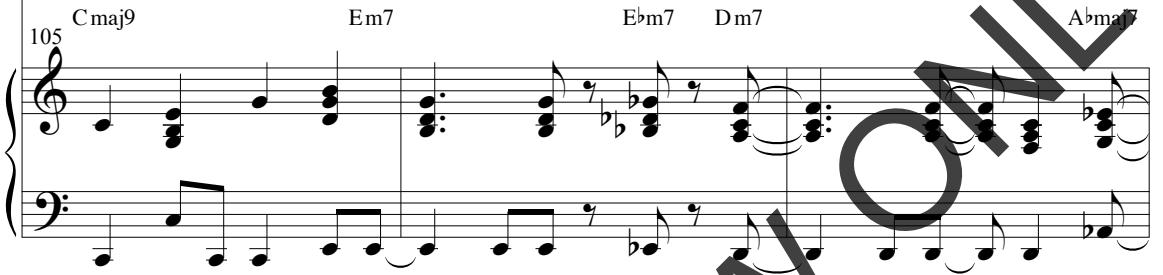
102

105



Musical notation for measures 105-107, showing empty staves for vocal and piano parts.

105 Cmaj9 Em7 Ebm7 Dm7 Abmaj7



Musical notation for measures 105-107, including piano accompaniment and chord labels: Cmaj9, Em7, Ebm7, Dm7, Abmaj7.

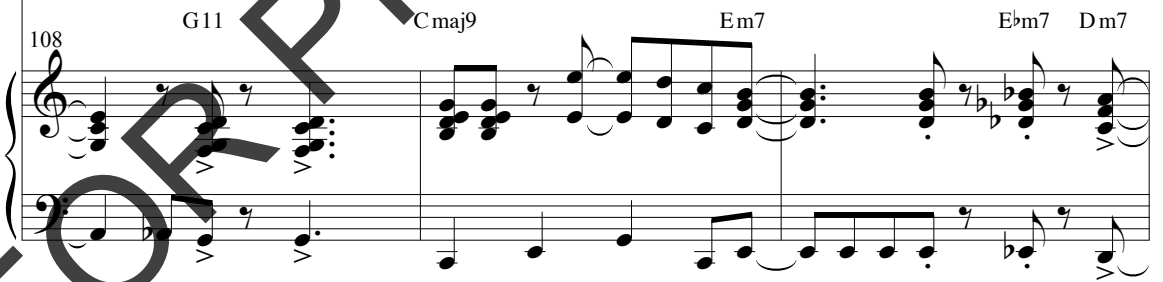
108

Give me Christ mas!_



Musical notation for measures 108-110, including vocal line and piano accompaniment. The lyrics are "Give me Christ mas!".

108 G11 Cmaj9 Em7 Ebm7 Dm7



Musical notation for measures 108-110, including piano accompaniment and chord labels: G11, Cmaj9, Em7, Ebm7, Dm7.

FOR PREVIEW ONLY

111

Give me Christ - mas!

This block shows the vocal line for the first system. It consists of a single treble clef staff. The melody begins with a whole rest, followed by a quarter rest, and then a series of eighth and quarter notes: G4, A4, B4, C5, B4, A4, G4. The lyrics 'Give me Christ - mas!' are written below the notes.

111

A♭maj7 G11

This block shows the piano accompaniment for the first system. It consists of two staves: a treble clef staff and a bass clef staff. The right hand plays chords and moving lines, while the left hand plays a steady eighth-note bass line. Chord symbols A♭maj7 and G11 are placed above the treble staff.

114 *poco rit.*

Yeah!

Yeah!

This block shows the vocal line for the second system. It consists of a single treble clef staff. The melody begins with a whole rest, followed by a quarter rest, and then a series of eighth and quarter notes: G4, A4, B4, C5, B4, A4, G4. The lyrics 'Yeah!' are written below the notes. The tempo marking *poco rit.* is placed above the first measure.

114 *poco rit.*

Cmaj13(#11)

This block shows the piano accompaniment for the second system. It consists of two staves: a treble clef staff and a bass clef staff. The right hand plays chords and moving lines, while the left hand plays a steady eighth-note bass line. Chord symbols Cmaj13(#11) are placed above the treble staff. The tempo marking *poco rit.* is placed above the first measure.

The Christmas Song

(Chestnuts Roasting on an Open Fire)

Words and Music by
ROBERT WELLS
 and **MEL TORMÉ**
 Arranged by David Wise

Tenderly, with passion ♩ = 64

75

N.C.

7

WOMEN: unison
mp

Chest - nuts roast - ing on an o - pen fire,

7

C6 Abdim7/C Cmaj9 F7(#11) Em7 Fmaj7 Fm(maj7) Fm6

© 1946 (Renewed) Edwin H Morris & Company,
 A Division of MPL Music Publishing, Inc. and Sony/ATV Music Publishing, LLC.
 All rights on behalf of Sony/ATV Music Publishing, LLC
 admin. by Sony/ATV Music Publishing, LLC, 8 Music Square West, Nashville, TN 37203
 All Rights Reserved. Reprinted by Permission of Hal Leonard Corporation.

EVEN IF YOU POSSESS A CCLI LICENSE, YOU MAY NOT COPY THIS MUSIC.
 If you have questions about CCLI, please call 800/234-2446.

10

MEN: unison
mf

Ooo

Jack Frost nip - ping at your nose,

Cmaj9

Gm7

C7(b9)

Fmaj7

A^bmaj7
B^b

10

12

yule - tide car - ols be - ing sung by a choir and

Am7

Fm6
A^b

C2
G

F#m11

B7(b9)

12

14

folks dressed up like Es - ki - mos.

unison

Ev - 'ry - bod - y

unison

Emaj9

Fm7

B^b13(b9)

E^bmaj9

Dm9

G7(b9)

14

16

knows a tur-key and some mis-tle-toe

16

Cmaj9 F7(#11) Cmaj9 Fmaj7 E7(#5)

18

help to make the sea-son bright. Ooo

18

Am7 Gm9 F#7(#11) Fmaj9 Bb7(#11)

20

Ti-ny tots with their eyes all a-glow will

20

Am7 Fm6/Ab C2/G F#m11 B7

FOR PREVIEW ONLY

22

76

SOLO (with a relaxed tempo) *mf*

They — know that
find it hard to sleep to - night.

Em7 A7(#5) Dm7 G7(b9) E2/A Fmaj13 Dm11 Cmaj

24

San - ta's on his way; he's — load-ed

mp

Ooo

Gm Gm(maj7) Gm7 C9

mf

26

lots of toys and good-ies on his sleigh. And ev - 'ry

Ooo

Ooo

Gm7 Bbmaj7 C C13(b9) Fmaj9

26

28

moth-er's child is gon-na spy to see if

Ooo

Ooo

Fm7 Bb13(b9) Gm7 Cm7

28

FOR PREVIEW ONLY

30

77

rein - deer__ real - ly know how to fly.

*unison**And**unison*

30

D7sus
A

A \flat 7(#11)

*F*maj7
G

*G*13(\flat 9)

32

so, I'm of - fer - ing this sim - ple phrase to

32

G \flat m7(\flat 5)

*F*7(#11)

*E*m7

*A*m7

*D*m7

*G*7(\flat 9)

34

kids from one to nine - ty - two: al -

kids from one to nine - ty - two:

Bb C Gm7 Abaug7 Gb Fmaj7(#11) Bb7(#11)

34

36

though it's been said man-y times man-y ways, Mer-ry Christ-mas to

Am7 Em6 Ab Cmaj9 F#m11 B7(b9) Em7 Am7 Dm7 G7(b9)

36

39

you!

C6 Abdim7 C Cmaj9 Am7 Ab7(#11) Gm Gm(maj7)

39

mf

42

42

Gm7 C9 Gm7 Bbmaj7 C C13(b9)

44

78

44

Fmaj9 Fm7 Bb13(b9)

46

unison

To see if rein - deer real - ly know how to

46

Gm7 Cm7 D7sus A A7(#11)

48

fly, fly. Ah, know how to

unison

Do they know how to fly?

48

Ebmaj9 D♭9 Gm7 Am7 D♭maj7 Cm7

cresc.

51

f fly, how to fly! *ff* And so, I'm of-fer-ing this

rit. *a tempo* *unison* *mf*

51

D♭maj7 Eb Dm7(b5) G7sus Fmaj7 G F#m7(b5) F7(#11)

f *rit.* *mf a tempo*

54

79

sim-ple phrase to kids from one to nine-ty -

kids from one to nine-ty -

54

Em7 Am7 Dm7 G7(b9) B♭ C Gm7 F#7(#11)

56

two: al - though it's been said man-y

two:
Fmaj7 Bb7(#11) Am7 Fm6
Ab

56

8va

58

times man - y ways, Mer - ry Christ - mas to

Cmaj9 F#m11 B7(b9) Em7 Am7 Dm7 G7(b9)

58

60

you Mer-ry Christ - mas

molto rit. *mp*

Cmaj9 Fmaj9 D7(#11) D7 Em7 G A7(#9#5) G

60

molto rit. *mp*

FOR PREVIEW ONLY

63 *lightly*

to you.

Dm9
G

G7(b9)

C6

A^{dim}7
C

66

66

C6

A^{dim}7
C

F2
A

Fmaj13

Dm11

Cmaj9

rit.

p

Deck the hall! Trim the tree! Light the lights! It's Christmastime! **And that means it's time to sing!** We love to sing at Christmas more than any other time of year. Carols, hymns, funny songs, sad songs, songs about the Christmas story and about the Savior, songs about being home for the holidays, songs about reindeer that can fly and mistletoe and pumpkin pie, and everything in-between! We sing because it's a season of joy. We sing because it is a tradition. We sing because laughter fills the air, chestnuts are roasting on the street corner, bell-ringers are collecting for charities, sidewalk Santas are Ho-Ho-Ho-ing, and children everywhere (and some adults too) are thrilled with the sights and sounds of that most wonderful time of the year! **'Tis the season to sing!**

Churches everywhere will be assembling their choirs and orchestras, soloists, and instrumentalists this Christmas. They will gather together with congregations and communities large and small to celebrate the joy of Christmas in song. In some cases, audiences will be sung to; in other cases they will be invited to sing along. Carolers will go 'a-caroling, children's choirs will raise angelic voices, and bell choirs will ring out the sounds of the season. **FA LA LA LA LA!**, the new yuletide songbook from WORD Music, has been created especially for churches and community choirs who both wish to convey the true message of Christmas—proclaiming the birth of our Savior—and who want to embrace their communities and time-honored traditions by providing a safe, welcome setting for celebrating some of our most beloved, popular Christmas songs. Songs like *Deck the Hall*; *Holly Jolly Christmas*; *The Christmas Song*; *Santa Claus Is Comin' to Town*; *Nuttin' for Christmas*; and *Rudolph, the Red-Nosed Reindeer*, will warm hearts and prepare the way for powerful messages to be found in songs like *It Came Upon the Midnight Clear* and *Mary, Did You Know?* Round it out with some of the best new Christmas songs you've heard in years by your favorite Christian Music artists, like Francesca Battistelli and Sidewalk Prophets, and you have one of the most eclectic, exciting and dynamic seasonal choral collections ever offered!

With arrangements by Cliff Duren, David T. Clydesdale, Daniel Semsen, Joshua Spacht and David Wise, you'll find yourself coming back to these songs and arrangements over and over again. Complement the performance of these tinsel-time favorites with the fun and captivating DVD Accompaniment Track to bring a special dose of Christmas cheer to your church and community with **FA LA LA LA LA!** Merry Christmas!

Deck the Hall • *Holly Jolly Christmas* • *Rudolph, the Red-Nosed Reindeer* •
The Twelve Days of Christmas • *Christmas Is* • *Santa Claus Is Comin' to Town* •
Nuttin' for Christmas with *All I Want for Christmas Is My Two Front Teeth* •
Rockin' Around the Christmas Tree • *It Came Upon the Midnight Clear* •
Mary, Did You Know? • *Merry Christmas to You* • *Give Me Christmas* • *The Christmas Song*